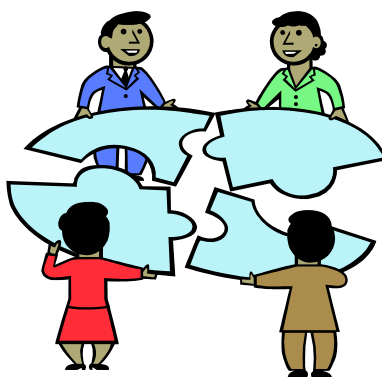


Florida Department of Health Nassau County Community Resource Guide



Updated January 2015

About the Community Resource Guide

The Nassau County Resource Guide is a referral tool to assist you in linking your clients to various organizations that offer assistance based on their needs. The information furnished in this resource guide is not meant to be a comprehensive listing of every service throughout Nassau County. Inclusion of these guides/links does not represent endorsement of the organization or its program, nor does exclusion represent lack of endorsement.

The most up to date resource guide can be located at
www.nassaucountyhealth.org.

ADDICTION AND MENTAL HEALTH RESOURCES

NACDAC's Mental Health Resource Guide:
[NACDAC Resource Guide 2013.pdf](#)

ADULT EDUCATION

ADULT EDUCATION AND DROP OUT PREVENTION

Services: Nassau County Adult Education offers GED Prep classes at four locations on a flexible schedule. For current class and testing schedules, check out the links on the following website:

http://www.edline.net/pages/Nassau_County_School_District/Department/Adult_Education

For additional information, contact (904) 548-1750

EMERGENCY CONTACT INFORMATION

DIAL 9-1-1 FOR ALL EMERGENCIES

NASSAU COUNTY EMERGENCY MANAGEMENT SERVICES

www.nassaucountyfl.com/index.aspx?nid=370

77150 Citizen's Circle
Yulee, FL 32097

Phone: (904) 548-4980
Toll free: 1-800-958-3494
Fax: (904) 548-9335
Info: ncem@nassaucountyfl.com

Hours: Monday-Friday 8:00am-5:00pm

Services: Offers information related to disaster and emergency preparedness. Offers tips for being prepared, weather updates, evacuation routes, emergency shelter information, and more.

CONTACT INFORMATION-FIRE DEPARTMENT/SHERIFF'S OFFICE/POLICE DEPT

BRYCEVILLE (9-1-1)

Fire (904) 266-2452
Sheriff: (904) 353-7072

CALLAHAN (9-1-1)

Fire (904) 879-3577
Sheriff: (904) 879-3853

FERNANDINA BEACH (9-1-1)

Address: 1525 Lime St., Fernandina Beach, FL 32034

Fire: (904) 277-7331
Police Dept: (904) 277-7342

HILLIARD (9-1-1)

Fire: (904) 845-3555
Sheriff: (904) 845-7089

YULEE (9-1-1)

Fire: (904) 491-7525
Sheriff: (904) 548-401

CHILDCARE/PRESCHOOL

EPISCOPAL CHILDREN'S SERVICES

www.ecs4kids.org

Nassau County Office

c/o Worksource
96042 Lofton Square Court
Yulee, FL. 32097

Phone: (904) 491-3638
Fax: (904) 277-7219

Office hours: Monday-Friday 8:00am-5:00pm

Walk-in hours: Monday-Thursday 9:00am-11:00am

Services: *Child Care Resource and Referral Program*-provides information about childcare providers (school-based, church affiliated, special needs care, weekend care, before and after school programs, and summer camps). Information is obtained by calling the office, visiting in person, or via website. To register your child for VPK (Voluntary Pre-K), apply online at <https://spe.schoolreadiness.org/pe/> or call the Nassau County Office.

CLOTHING ASSISTANCE

BARNABAS CENTER

www.barnabasnassau.org

Main Office

1303 Jasmine Street, Suite 101
Fernandina Beach, FL 32034

Phone: (904) 261-7000
Toll free: 1-888-885-6498
Fax: (904) 277-2984

Hours: Monday: 1:00pm - 4:00pm (phones open at 10:00am)
Tuesday -Thursday: 10:00am - 3:00pm
(Appointments are required)

Services: Clothing/Furnishings (referral to "New to You" Resale Store for qualified clients)

Eligibility: Must have an appointment, show proof of Nassau County residency, proof of income and social security cards for all family members, and confirm changes in situation that require assistance.

"New to You" Resale Store

930 South 14th Street
Fernandina Beach, FL 32034

Phone: (904) 321-2334

Hours: Monday – Saturday 9:30am-5pm

Services: Provides donated clothing, furniture, appliances, jewelry, and sporting equipment. Must have a referral from Main Office.

GOODWILL
www.goodwilljax.org

474282 State Rd 200
Fernandina Beach, FL 32034

Phone: (904) 321-0086

Hours: Monday-Saturday 10:00am-7:00pm
Sundays 11:00am-5:00pm

Services: Provides gently used clothing, furniture, and household items.

HUBBARD HOUSE THRIFT STORE

6629 Beach Boulevard
Jacksonville, FL 32216

Phone: (904) 400-6333
Fax: (904) 855-4026

Hours: Monday-Saturday 10:00am-6:00pm

Services: Provides clothing, household items, and furniture to persons and clients of Hubbard House Outreach Center.

SALVATION ARMY HOPE HOUSE

410 S 9th Street
Fernandina Beach, FL 32034-3623

Phone: (904) 321-0435
Fax: (904) 277-8019

Office Hours: Monday-Friday 10:00am-5:00pm (closed 12:00-1:00)

Clothes Closet Hours: Mondays, Wednesdays, and Fridays 10:00am-4:00pm (closed 12:00-1:00)

Services: Provides free emergency clothing to anyone in need.

THE PURPLE DOVE RESALE CENTER (MICAH'S PLACE)

www.micahsplace.org/getinvolved/resalecenter.html

Purple Dove Resale Center
474311 East SR 200
Fernandina Beach, Florida 32034
(next to Dicks Wings)

Phone: (904) 261-5227
Fax: (904) 491-6362
Info: www.micahsplace.org

Hours: Monday - Friday 10:00am to 5:00pm
Saturdays - 9:00 am to 5:00pm

Services: Provides upscale resale furniture, household items, ladies fine apparel, as well as men's & children's clothing. Items created by survivors of domestic violence sometimes available on consignment. Information about domestic violence services in Nassau County available. Micah's Place participants eligible for free items (referral needed).

CRISIS SERVICES

BARNABAS CENTER (Crisis Assistance)

www.barnabasnassau.org

Main Office

1303 Jasmine Street, Suite 101
Fernandina Beach, FL 32034

Phone: (904) 261-7000
Toll free: 1-888-885-6498
Fax: (904) 277-2984

Barnabas Crisis Assistance Services are listed under the **Clothing, Housing, Medical Services, and Dental Services Sections** of this directory.

CHILD ABUSE HOTLINE

Report child abuse in Florida: 1-800-962-2873

CHILD ADVOCATE RAPID RESPONSE TEAM C.A.R.R.T.

Nassau County Full Service School

86207 Felmor Road
Yulee, FL 32097-5303

Phone: (904) 277-9063
Fax: (904) 225-8521

Hours: Monday-Friday 8:00am-5:00pm

Services: Provides support for children who are either a victim of a crime or have witnessed a crime. Assistance includes crisis intervention, emotional support, criminal justice information, court support, and emergency assistance. Assistance is provided at various locations, including the child's school and home.

DAY DROP-IN CENTER (DDC) OF NASSAU COUNTY

www.clicked.com/coalition

For info, contact the Coalition for the Homeless: (904) 556-2496

Fernandina Beach Church of Christ Building (facing 14th St)
1005 South 14th Street

Mission Statement: To provide a safe, compassionate and supportive environment in which people who are experiencing homelessness or who are at risk of homelessness are welcome and able to access appropriate facilities, services, and resources.

Sponsoring Organization: The Coalition for the Homeless of Nassau County in partnership with other local agencies and organizations with the participation of local volunteers

Hours: The center will be open from 10am - 2pm, twice per week.

Services: include, but are not limited to, the following;

- Respite from the heat/cold
- Access to snacks and water
- Access to toilet facilities
- Access to hot showers and laundry facilities
- An address/phone number and place to receive mail and store important documents securely
- Assisted access to telephones and computers for the purpose of researching, applying for and acquiring identification, benefits, appropriate assistance, and/or employment
- Access to information regarding available community, state, and federal services
- Referrals to local service providers
- First-level medical checkups for blood pressure and sugar level
- Access to caring, concerned volunteers who are skilled at listening to the needs of clients and able to discern how best to meet those needs

DEPARTMENT OF CHILDREN AND FAMILIES

www.dcf.state.fl.us

463688 State Road 200 # 3
Yulee, FL 32097-0301

Phone: (904) 548-9300

Hours: Monday-Friday 8:00am-5:00pm

Services: Investigates child abuse cases and provides referrals

FAMILY SUPPORT SERVICES OF NORTH FLORIDA (FSSNF)

Fssjax.org

Info: info@FSSNF.org

After hours emergency line: 904.421.5818

TDD: 1-800-955-877

Yulee Location:

Phone: (904) 225-5347

96016 Lofton Square Court
Yulee, FL 32097

(located at Lofton Square shopping center at State RD 200 and Amelia Concourse)

Jacksonville location:

Phone: 904.421.5800

1300 Riverplace Boulevard
Suite 700

Jacksonville, FL 32207 (Southbank area, near Main Street Bridge)

About: Family Support Services of North Florida (FSSNF) is a non-profit organization created to perform the duties of Lead Agency in the Community Based Care project in Duval County and Nassau County, Florida. As the Lead Agency, FSSNF provides all child protection services previously performed by the Department of Children and Families (DCF).

Services: Provides adoption, foster care, family preservation and independent living.

**FLORIDA COMMUNITY PREVENTION CENTER
(Formerly Healing Balm of Northeast Florida)**

<http://www.floridacommunityprevention.com/>

Main Office in Yulee:

96098 Victoria's Place
Yulee, FL 32097

Phone: (904) 321-4097

Toll free: 1-866-366-8990

(Located across from Chick Filet and Yulee Walmart on State Rd 200) Fax: (904) 321-5668

Jacksonville Office (Operation New Hope)

40 East State Street, Suite B
Jacksonville, FL 32202

Phone: (904) 353-2508

Fax: (904) 353-2588

Located on corner of Ocean and State Street)

Hours: Monday-Friday 8:00am-5:00pm

By appointment only on Saturday and Sunday.

Services: Provides substance abuse education and awareness, community development capacity building, sexual assault counseling, community health forums including anger management, health training and seminars, youth counseling. NOTE: Most services open and free to public.

Also offers physicals and access to other medical and health services. Free confidential HIV/AIDS testing site is open to all. By appointment on Saturday and Sunday.

Eligibility: Accepts Medicaid and accepts others based upon sliding scale fee

FLORIDA SUICIDE AND CRISIS HOTLINE

www.suicidehotlines.com/florida.html

Phone: (904) 632-0600

Toll free: 1-800-346-6185

United Way 211

Services: Provides suicide and crisis counseling over the phone.

GUARDIAN AD LITEM

www.guardianadlitem.org

Fourth Judicial Circuit
220 E. Bay Street 6th Floor
Jacksonville, Florida 32202

Phone: (904) 630-1200

Fax: (904) 630-0757

Hours: Monday-Friday 8:00am-5:00pm

Services: Provides legal help for abused and neglected children by working with volunteers and pro bono attorneys.

HUBBARD HOUSE OUTREACH CENTER

www.hubbardhouse.org

P.O. Box 4909
Jacksonville, FL 32201

Admin: (904) 354-0076

24 hour Toll free: 1-800-500-1119

24 hour hotline: (904) 354-3114

Info: hubbardhouse@hubbardhouse.org

Services: Provides temporary housing for male and female victims of domestic violence. 24 hour staff provides physical and emotional support. Other services include individual and group counseling for adults and children, comprehensive victim advocacy, licensed therapeutic child care, and before- and after- school care for school-aged children.

Eligibility: Must be a victim of domestic violence.

MICAH'S PLACE

www.micahsplace.org

P. O. Box 16287
Fernandina Beach, FL 32035

Admin: (904) 491-6364

Fax: (904) 491-6362

24 hour hotline: (907) 225-9979

24 hour hotline: 1-800-500-1119

Info: executivedirector@micahsplace.org

Services: Provides prevention and intervention services to victims of domestic violence. Offers a safe and confidential shelter, advocacy, 24-hour hotline, counseling, legal services (includes injunction for protection), and support groups.

Eligibility: Must be a victim of domestic violence. NOTE: Although Micah's Place only houses women and children, men are also helped and referred to a shelter that houses men (closest: Hubbard House in Duval County-check under "Services in Jacksonville" for more information).

SAFE KIDS
(904) 202-4203

SEXUAL ASSAULT (RAPE)
1(888) 956-7273

STARTING POINT BEHAVIORAL HEALTH
(Previously Sutton Place)
www.spbh.org

463142 SR 200 West
Yulee, FL 32097

Phone: (904) 225-8280
Fax: (904) 225-8232

Hours: Monday-Friday 8:00am-5:00pm

Services: Free HIV testing with appointment.

SUICIDE LIFELINE (24 HOURS)
1(800) 273-TALK

United Way's 211 Help Line

211 is an information line and suicide/crisis intervention line

Phone: Call 211 from any land line or cell phone

Services: Operators provide referrals and information on various topics. Provides the following services: medical & health services, mental health and substance abuse services, food, shelter & clothing, support groups, information about emergencies, such as hurricane shelter locations, services for people with disabilities, HIV/AIDS info and testing, RealSense locations for tax preparation and savings plans, adult, child, and family services, help for victims of abuse or crime, financial assistance, problem-solving for people unsure of their needs.

Eligibility: It is free and open to all

VICTIM SERVICES ADVOCATE
www.nassaucountysheriff.com

76001 Bobby Moore Circle
Yulee, FL 32097

Victim Advocate Phone: (904) 548-4099
After hours: call Sheriff's office

Hours: Monday-Friday 8:00am-5:00pm (on call 24 hours)

Services: Advocate provides assistance for victims and witnesses of crimes. The advocate addresses physical and psychological well-being by providing crisis intervention, emotional support, criminal justice information, court support, and emergency assistance.

DENTAL SERVICES

BARNABAS CENTER

www.barnabasnassau.org

Barnabas Dental Program

1303 Jasmine Street, Suite 101

Fernandina Beach, FL 32034 *This is the new Fernandina location starting February 2014*

Phone: (904) 261-7887

(888) 885-6498

Hours: Tuesday – Thursday 8:00am-4:00pm

Services: Includes, exams, fillings, x-rays, extractions, dentures, emergency visits, and cleanings.

Eligibility: Must be at least 21 years old, Nassau County resident, have social security card for every member of family, proof of income, and Medicaid card if applicable. Photo ID required.

FL DEPARTMENT OF HEALTH in NASSAU COUNTY

www.nassaucountyhealth.org

Services: Serves children ages 1-20 and adults. Wide range of services provided. NOTE: No restorative work on 1-2 year olds. Proper child oral hygiene education given to parents during visit.

Eligibility: Child must be on state insurance (i.e. Medicaid, Healthy Kids) or self-paid. Limited services for adults based upon specific programs. Referrals available for uninsured.

Hilliard Dental Clinic

37203 Pecan Street

PO Box 595

Hilliard, FL 32046

Phone: (904) 845-4761

Fax: (904) 845-4076

Hours: Mondays and Wednesdays, 8:00-5:00pm (closed daily 12:00-1:00)

Nassau County Full Service School Dental Clinic

86207 Felmor Road

Yulee, FL 32097-5303

Phone: (904) 548-1849

Fax: (904) 225-8520

Hours: Monday-Thurs 8:00am-5:00pm (closed daily 12:00-1:00)

Friday 8:00-12:00pm

ELDER SERVICES

COUNCIL ON AGING

<http://www.nassaucountycoa.org/>

Services: Provides Adult Day Healthcare (NOT provided at Westside Senior Center), Meals on Wheels, and In-home services including minor house maintenance and repair, respite care, and personal care.

Eligibility: Must be age 60+, and must call a senior center to speak to a case worker.

Hours: Monday-Friday 8:00am-5:00pm

Eastside Senior Center

1367 South 18th Street

Fernandina Beach, FL 32034

Phone: (904) 261-0701

Fax: (904) 261-0704

Westside Senior Center

37002 Ingham Road

Hilliard, FL 32046

Phone: (904) 845-3331

Fax: (904) 845-4491

ELDERSOURCE
www.myeldersource.org

4160 Woodcock Drive 2nd floor
Jacksonville, FL 32207

Phone: 904-391-6699
Toll free: 1-888-242-4464
Fax: 904-391-6601
Info: information@myeldersource.org

Hours: Monday-Friday 7:30am-6:30pm

Services: Elders, caregivers, and the general public can obtain information, referrals, and assistance relating to aging issues. Includes in-home, senior center and community services; caregiver support; information and education; health insurance counseling; transportation; legal; nutrition programs; SHINE (Serving Health Insurance Needs of Elders); and more.

EMPLOYMENT ASSISTANCE

DAY DROP-IN CENTER (DDC) OF NASSAU COUNTY

www.clicked.com/coalition

Fernandina Beach Church of Christ Building (facing S. 14th St)
For info, contact the Coalition for the Homeless:
1005 South 14th Street

Phone: (904) 556-2496

Mission Statement: To provide a safe, compassionate and supportive environment in which people who are experiencing homelessness or who are at risk of homelessness are welcome and able to access appropriate facilities, services, and resources.

Sponsoring Organization: The Coalition for the Homeless of Nassau County in partnership with other local agencies and organizations with the participation of local volunteers

Hours: The center will be open from 10am - 2pm, twice per week.

Go to next page for a list of Day Drop-In Center (DDC) services...

Services: include, but are not limited to, the following;

- Respite from the heat/cold
- Access to snacks and water
- Access to toilet facilities
- Access to hot showers and laundry facilities
- An address/phone number and place to receive mail and store important documents securely
- Assisted access to telephones and computers for the purpose of researching, applying for and acquiring identification, benefits, appropriate assistance, and/or employment
- Access to information regarding available community, state, and federal services
- Referrals to local service providers
- First-level medical checkups for blood pressure and sugar level
- Access to caring, concerned volunteers who are skilled at listening to the needs of clients and able to discern how best to meet those needs

GOODWILL- JOB JUNCTION

www.goodwilljax.org

6841 Blanding Blvd
Jacksonville, FL 32244

Phone: (904) 779-2894

Hours: Monday-Friday 8:30am-5:00pm

Services: Free employment services to those seeking employment such as workshops (computer use, resume writing, soft skills), career counseling, on-site interviews with employers, career fairs, job listings, and Hello Line for those without a phone to contact and be contacted by employers for pre-employment purposes. Check website for more locations.

ILRC OF NORTHEAST FLORIDA

www.cilj.com

2709 Art Museum Drive
Jacksonville, FL 32207

Phone: (904) 327-0774
Toll free: 1-888-427-4313

Hours: Monday-Friday 8:00am-5:00pm

Services: *Employment Services Department* offers resume building classes, computer skills trainings, benefits planning, mock interviews, job placement, advocacy and money smart classes. *The High School/High Tech (HS/HT) Program* is a community-based partnership made up of students, parents and caregivers, businesses, educators, and rehabilitation professionals. The purpose is to provide high school students with all types of disabilities the opportunity to explore jobs and postsecondary education leading to technology-related careers.

JOBCORPS

jacksonville.jobcorps.gov

4811 Payne Stewart Drive
Jacksonville, FL 32209

Phone: (904) 360-8200
Toll free: 1-800-733-5627
Fax: (904) 632-5498

Hours: Monday-Friday 8:00am-5:00pm

Services: No-cost academic and career technical training programs for individuals age 16-24. Academic training includes reading and math, independent living, employability skills, and GED/High School Diploma attainment. Career technical training is offered in various areas. Center provides allowance, housing, meals, and graduate benefits.

Eligibility: Must be age 16-24, and be in a low income household (specified by the admissions counselor). Cannot have a criminal record, and if so, case needs to be closed at least one year. There are also suitability requirements that are based on an interview with an admissions counselor.

NORTHEAST FLORIDA COMMUNITY ACTION AGENCY

www.nfcaa.net

Jasmine Office Center *Phone:*
1303 Jasmine St, Suite 100
Fernandina Beach, Florida 32034

(904) 261-0801
Fax: (904) 261-3188
Info: contact@nfcaa.org

Hours: Monday-Friday 8:00am-5:00pm

Services: Family Self Sufficiency Program (FSSP) provides employment, educational, and asset building services.

Eligibility: Must be enrolled in FSSP Program. Must be "low-income" as specified by the federal government's Poverty Guidelines.

WORKSOURCE
www.worksourcefl.com

96042 Lofton Square Court
Yulee, FL 32097

Phone: (904) 432-0009
Fax: (904) 277-7219

Hours: Monday-Friday 8:00am-5:00pm

Services: Provides education, training, and career services such as resume writing workshops, interviewing skills, and computer education. Works with local businesses who want to post job listings. Individuals can sign up for unemployment at this location.

FOOD ASSISTANCE

Fernandina Beach Church of Christ
1005 South 14th Street
Fernandina Beach, FL 32034

Phone: (904) 277-2517

Hours: Monday-Friday 8:00am-5:00pm

Services: Provides quality food at very low cost. Food is purchased in advance with cash, credit card, or food stamps. Call to place an order and for pick-up information. This organization also provides a food pantry for those requiring emergency food assistance. Visit www.cocfb.org/app/ for more information.

BARNABAS CENTER
www.BarnabasNassau.org

Main Office
1303 Jasmine Street, Suite 101
Fernandina Beach, FL 32034

Phone: (904) 261-7000
Toll free: 1-888-885-6498
Fax: (904) 277-2984

Hours: Monday: 1:00pm - 4:00pm (phones open at 10:00am)
Tuesday -Thursday: 10:00am - 3:00pm

Services: Food pantry is available for those in crisis. Client may be eligible once every 30 days with proper documentation. Encouraged to apply for food stamps. For more information, contact Barnabas at 261-7000 or email info@barnabasnassau.org.

Eligibility: Show proof of Nassau County residency

COALITION FOR THE HOMELESS

<http://www.clicked.com/coalition>

Mailing Address
P.O. Box 16123
Fernandina Beach, FL 32035

Phone: (904) 556-2496
Info: info@chnassau.com

The Coalition for the Homeless of Nassau County, Florida, brings together more than 100 agencies, organizations and individuals working together to prevent homelessness and improve conditions for those experiencing homelessness.

Two following two Soup Kitchens are available through the Coalition for the Homeless:

Fernandina Interfaith Dinner Network at Hope House/Salvation Army serves meals to anyone in need 4 nights per week; Mon, Tues, Thurs, Fri. from 5 - 7 pm

Yulee Interfaith Dinner Network - Gracie's Kitchen - behind Old Yulee Middle School on US Hwy. 17 and Pages Dairy Rd serves 2 nights per week; Tues and Thurs, and the 2nd Monday (with the remaining Mondays forthcoming soon) from 5 - 7 pm

A **Soup Train** also delivers 2 healthy frozen meals per week to seniors in need who have been identified in our county and are not being serviced by Meals on Wheels.

Day Drop-in Center (DDC) of Nassau County

www.clicked.com/coalition

Fernandina Beach Church of Christ Building (facing S. 14th St) For info, contact the Coalition for the Homeless:
1005 South 14th Street (904) 556-2496
Fernandina Beach, FL

Mission Statement: To provide a safe, compassionate and supportive environment in which people who are experiencing homelessness or who are at risk of homelessness are welcome and able to access appropriate facilities, services, and resources.

Sponsoring Organization: The Coalition for the Homeless of Nassau County in partnership with other local agencies and organizations with the participation of local volunteers

Hours: The center will be open from 10am - 2pm, twice per week.

Services: include, but are not limited to, the following;

- Respite from the heat/cold
- Access to snacks and water
- Access to hot showers, toilet, and laundry facilities
- An address/phone number and place to receive mail and store important documents securely
- Assisted access to telephones and computers for the purpose of researching, applying for and acquiring identification, benefits, appropriate assistance, and/or employment
- Access to information regarding available community, state, and federal services
- Referrals to local service providers
- First-level medical checkups for blood pressure and sugar level
- Access to caring, concerned volunteers who are skilled at listening to the needs of clients and able to discern how best to meet those needs

COUNCIL ON AGING
www.seniorcenteramelia.com

Eastside Senior Center
 1367 South 18th Street
 Fernandina Beach, FL 32034
Hours: Monday-Friday 8:00am-5:00pm

Phone: (904) 261-0701
Fax: (904) 261-0704

Services: Meals on Wheels provides nutritionally balanced meals for the elderly that are delivered to the individual's home.

Eligibility: Must be age 60+ and contact the senior center to speak to a case manager.

THE FOOD ASSISTANCE PROGRAM
(Formerly known as Food Stamps)

www.dcf.state.fl.us/programs/access

Department of Children and Families
 463688 State Rd. 200
 Yulee, FL 32097

Phone: (904) 548-9305

Hours: Monday-Friday 8:00am-5:00pm

Services: Food Stamp Program helps low income individuals and families purchase food. The Temporary Cash Assistance (TCA) Program provides short-term cash benefits to families with children under the age of 18, and pregnant women in their last trimester. Must apply online via www.myflorida.com/accessflorida. Can also visit the DCF office and register using their computers.

Eligibility: Includes income, size of household, employment status, and special situations (i.e. pregnancy and disability). Eligibility form available online, but is only a screening tool. Even if individual is found to be ineligible, they may still complete an application for official review.

Local community partner agencies help the Department of Children and Families provide access to public assistance services. Locations in our area where you may apply for Food Assistance, Cash or Medicaid:

Partner Name	Customers Served	Address
Starting Point Behavioral Health (formerly Sutton Place)	General Public	463142 SR 200
America's Youth, Inc. At Macedonia AME Church	General Public	202 S 9th Street P.O. Box 6216
Barnabas Center	Current Client Population	1303 Jasmine Street
Council On Aging Of Nassau County Westside Senior Center	Current Client Population	37002 Ingram Road
Episcopal Children's Services - Yulee	Current Client Population	96042 Lofton Square
Housing Authority Of The City Of Fernandina Beach	Current Client Population	1300 Hickory Street
Just For The Love Of Jesus Ministries, Inc.	General Public	45101 Blessed Way
Life Care Center Of Hilliard	Current Client Population	3756 W Third St
New Zion Missionary Baptist Church	General Public	10 S 10th St
Northeast Florida Community Action Agency - Nassau County	Current Client Population	1303 Jasmine St., Ste. 100
Quality Life Center Of Jacksonville	General Public	941510 Old Nassauville Road

GLEANERS DISPATCH

www.gleanersdispatch.org

Main Office

8207 103rd Street
Jacksonville, Florida 32210-6553

Phone: (904) 777-6344

Fax: (904) 777-6362

Info gleaners4u@bellsouth.net

Services: Re-distributes free, fresh food during the week to anyone needing a meal. Main site is the Nassau County 4H Building in Callahan. NOTE: Not a food pantry or food bank. Call main number or check website for distribution days and times.

GRAY GABLES CHURCH

www.graygables.org

54031 Church Road
Callahan, FL 32011

Phone: 904-879-2986

Fax: 904-879-1743

Hours: Monday-Thursday 8:00am-5:00pm
Fridays 8:00am-1:00pm

Services: CUP Ministry provides emergency non-perishable food.

Eligibility: Must be a Nassau County resident.

JOURNEY CHURCH

www.authenticimpact.com

96064 Victoria's Place (Across highway from Chick Filet)
Yulee, FL 32097

Hours: Tuesdays, Thursdays, and every third Saturday. Outreach times between 11-12pm. Doors open at 10:00am for fellowship.

Services: Boxes of foods available (i.e. meats, dried goods, and produce) for families in need. For more information, please contact the Journey Church at (904) 261-8310.

SALVATION ARMY HOPE HOUSE

410 S 9th Street
Fernandina Beach, FL 32034-3623

Phone: (904) 321-0435

Fax: (904) 277-8019

Office Hours: Monday-Friday 10:00am-5:00pm (closed 12:00-1:00)

Food Pantry Hours: Mondays, Wednesdays, and Fridays 10:00am-4:00pm (closed 12:00-1:00)

Services: Food pantry provides emergency food to anyone in need. Interfaith Dinner Network (IDN) cooks and serves dinner to anyone needing a meal 4 nights a week (call for specific times).

SECOND HARVEST FOOD BANK OF NORTH FLORIDA

www.wenourishhope.org

1502 Jessie Street
Jacksonville FL 32206

Phone: (904) 353-3663

Fax: (904) 358-4281

Info: thale@lssjax.org

Services: Works with local organizations to provide food to community members through various programs. *Kids Café* and the *BackPack Program* provide food for children by working with local youth agencies and schools. The *Mobile Pantry* provides food to needed neighborhoods at a pre-determined distribution point.

WIC-WOMEN, INFANTS, AND CHILDREN

www.nassaucountyhealth.org

Services: Nutrition program for women who are pregnant or breastfeeding and their children birth to age 5. The following is provided: healthy foods, nutrition education and counseling, breastfeeding education and classes, and referrals for health care, immunizations, and community services.

Eligibility: Child must be age 5 or less, and family must be income eligible based on WIC Income Guidelines. Family does not have to be on public assistance to qualify for WIC.

Callahan Clinic
45377 Mickler Street
PO Box 551
Callahan, FL 32011

Phone: (904) 879-6377
Fax: (904) 879-5250

Hours: Tuesday & Thursday 8:00am-4:00pm (closed daily from 12:00-1:00)

Hilliard Clinic
37203 Pecan Street
PO Box 595
Hilliard, FL 32046

Phone: (904) 845-2660
Fax: (904) 845-4076

Hours: Wednesday 8:00am-4:00pm (closed daily from 12:00-1:00)

Yulee Clinic
86014 Page's Dairy Road
PO Box 1493 (32041-1493)
Yulee, FL 32097

Phone: (904) 548-1890
Fax: (904) 225-0850

Hours: Monday - Thursdays 8:00am-4:00pm (closed daily from 12:00-1:00)

GENERAL HEALTH

AMERICAN CANCER SOCIETY-NASSAU UNIT

www.cancer.org

1430 Prudential Drive
Jacksonville, FL 32207

Phone: (904) 391-3644
Toll free: 1-800-227-2345
Fax: (904) 270-0976

Hours: Monday-Friday 9:00am-5:00pm

Services: Offers cancer patients and survivors an array of products ranging from wigs, scarves, and turbans, to prosthetic products, free of charge. Additionally, the organization offers transportation to and from appointments, and access to information, support groups and programs to help cancer patients and their caregivers navigate the cancer journey.

CW VISION INC

1925 South 14th Street Suite 4
Fernandina Beach, FL 32034

Phone: (904) 572-4420

Hours: 9am-12pm on Thursdays by appointment only!

Services: Free vision checks for those who qualify.

Eligibility: Must qualify within federal guidelines for income. Vouchers may be available through following places; Staring Point Behavioral Health (previously Sutton Place), Samaritan Clinic, Heiken Program, Hope House, Salvation Army, Barnabas and local churches (Church of Christ). Or you may apply by filing out an eligibility packet from CW Vision.

ENVIRONMENTAL SERVICES

www.nassaucountyhealth.org

96135 Nassau Place Suite B
Yulee, FL 32097

Phone: (904) 548-1830
Phone: (904) 879-6606
Fax: (904) 277-7278

Hours: Monday-Friday 8:00am-5:00pm

Services: Inspection of private wells and septic systems, beaches, limited food inspections (ex: lounges, bars), group home/care inspections, mobile homes and parks, fuel storage tanks, commercial swimming pools, biomedical facilities, and tanning salons.

FLORIDA COMMUNITY PREVENTION CENTER (Formerly Healing Balm of Northeast Florida)

<http://www.floridacommunityprevention.com/>

Main Office in Yulee:
96098 Victoria's Place
Yulee, FL 32097
(Located across from Chick Filet and Yulee Walmart on State Rd 200)

Phone: (904) 321-4097
Toll free: 1-866-366-8990
Fax: (904) 321-5668

Jacksonville Office (Operation New Hope)
40 East State Street, Suite B
Jacksonville, FL 32202
(Located on corner of Ocean and State Street)

Phone: (904) 353-2508
Fax: (904) 353-2588

Hours: Monday-Friday 8:00am-5:00pm
By appointment only on Saturday and Sunday.

Services: Provides substance abuse education and awareness, community development capacity building, sexual assault counseling, community health forums including anger management, health training and seminars, youth counseling. NOTE: Most services open and free to public.

Also offers physicals and access to other medical and health services. Free confidential HIV/AIDS testing site is open to all. By appointment on Saturday and Sunday.

Eligibility: Accepts Medicaid and accepts others based upon sliding scale fee.

FLORIDA BREAST AND CERVICAL CANCER EARLY DETECTION PROGRAM

Florida Department of Health in Duval County
900 University Boulevard North, Suite 710, MC -67
Jacksonville, FL 32211

Phone (904) 253-1317
Fax: (904) 253-2527

About: The Florida Breast and Cervical Cancer Early Detection Program address women's health needs and issues locally. The program offers free PAP and mammogram screening to uninsured, low-income women ages 50-64. The program raises awareness about breast and cervical cancer and provides education about the importance of screening including information about human papilloma virus (HPV) vaccination in the high burden communities.

FLORIDA QUITLINE

floridaquitline.com

Toll free: 1-877-U-CAN-NOW
(1-877-822-6669)

Services: Trained cessation counselors provide 24/7 smoking cessation counseling over the phone. Call to schedule an appointment. Counselor will help plan a personal cessation plan, and are available to offer tips and support whenever is needed.

GERRI'S CORNER

www.gerriscorner.com

601 Centre Street
Fernandina Beach, FL 32034-3938

Phone: (904) 277-0099
Info: gerriscorner@bellsouth.net

Hours Monday-Friday 12:00pm-4:00pm

Call to speak to someone regarding visits outside of business hours

Services: Non-profit organization that provides information and products for those affected by all types of cancer. Visits are confidential and one-on-one. Individuals can receive products from head wraps to prosthesis free of charge. Family and friends are welcome and can receive information regarding support groups, reference materials, DVD's, etc.

GENERAL HEALTH (INCLUDES HIV TESTING SITES)

FLORIDA COMMUNITY PREVENTION CENTER (Formerly Healing Balm of Northeast Florida)

<http://www.floridacommunityprevention.com/>

Main Office in Yulee:
96098 Victoria's Place
Yulee, FL 32097
(Located across from Chick Filet and Yulee Walmart on State Rd 200)

Phone: (904) 321-4097
Toll free: 1-866-366-8990
Fax: (904) 321-5668

Jacksonville Office (Operation New Hope)
40 East State Street, Suite B
Jacksonville, FL 32202
(Located on corner of Ocean and State Street)

Phone: (904) 353-2508
Fax: (904) 353-2588

Hours: Monday-Friday 8:00am-5:00pm

Services: Free HIV testing during business hours. By appointments only on Saturday and Sunday.

NASSAU ALCOHOL, CRIME, AND DRUG ABATEMENT COALITION (NACDAC)

www.nacdac.org

435 Citrona Drive
Fernandina Beach, FL 32034

Phone: (904) 261-5713 x2616
Fax: (904) 277-7043

Services: This county coalition is a partnership of law enforcement, city and county government, faith-based, human service, educational and community-based organizations. NACDAC seeks to educate and communicate with the general public, community organizations and community-serving organizations that work with youth, to eliminate drug, tobacco and alcohol use while reducing associated criminal behavior.

FLORIDA DEPARTMENT OF HEALTH – NASSAU COUNTY

www.nassaucountyhealth.org

Services: HIV and STD services available. No charge for treatment of STD contacts; there is a screening charge based on a sliding fee scale but no one is denied services based on inability to pay. HIV testing and counseling-a charge for anonymous test and sliding fee scale for confidential test. Will not deny service based on inability to pay. Limited case management available, however, individuals referred to Jacksonville clinics for care.

Callahan Clinic
45377 Mickler Street
PO Box 551
Callahan, FL 32011

Phone: (904) 879-2306
Fax: (904) 879-5250

Hours: Mondays-Thursdays 8:00am-5:00pm (closed daily 12:00-1:00pm)

Fernandina Beach Clinic
1620 Nectarine Street
PO Box 517 (32035-0517)
Fernandina Beach, FL 32034

Phone: (904) 548-1860
Fax: (904) 277-7283

Hours: Friday 8:00am-5:00pm (closed daily 12:00-1:00pm)

Yulee Clinic
86014 Page's Dairy Road
PO Box 1493 (32041-1493)
Yulee, FL 32097

Phone: (904) 548-1880
Fax: (904) 225-0850

Hours: Monday-Friday 8:00am-5:00pm (closed daily 12:00-1:00pm)

Vital Statistics:

Walk-ins clients

Florida Department of Health in Nassau County
Office of Vital Statistics
1620 Nectarine Street
PO Box 517 (32035-0517)
Fernandina Beach, FL 32034

Phone: (904) 548-1800 x5202 or x5211 of x5201 or x5328
Fax: (904) 277-7283

You Can Also:

Mail an application to:

Florida Department of Health in Nassau County
Office of Vital Statistics
30 South 4th Street
Fernandina Beach, FL 32034

Fax a request to us at:

ATTN: Vital Statistics
Fax: (904) 277-7283

LIFE SOLUTIONS

Women's Resource Centers of Jacksonville and Nassau is now – **LIFE Solutions**

www.LifeSolutionsFL.com



Locations:

12456 Sago Avenue West *Phone:* (904) 696-9100

Jacksonville FL 32218 *Fax:* (904) 696-9104

850966 US Highway 17 North *Phone:* (904) 696-9100

Yulee FL 32097 (call for hours)

Hours: Monday thru Friday – 10:00—5:00, Walk-ins welcome

Life Solutions is a ministry focused on providing compassionate, life-affirming services and support to women and men facing unexpected pregnancies. Our centers provide a safe, friendly, and non-judgmental environment where clients can discuss their fears and concerns and receive vital information regarding their health, pregnancy, and options. Pregnancy options counseling is provided to help the client make an informed decision by offering free pregnancy testing, life-affirming ultrasounds and accurate information so that they can make the best decision possible for their bodies, their unborn children and their future.

We also are an educational facility (parenting/life skill classes and material assistance) committed to helping families achieve lasting independence with an integrated approach that begins with meeting immediate needs but reaches much further to help people achieve independence and to alleviate the root causes of poverty. Earn While you Learn Program, Hannah's Hope (adverse diagnosis), and post-abortion healing workshops.

***For more information:**

Website—www.LifeSolutionsFL.com

Email—LifeSolutions.FL@gmail.com

Facebook—www.FollowLifeSolutions.com

STARTING POINT BEHAVIORAL HEALTH (Previously Sutton Place)

www.spbh.org

463142 SR 200 West
Yulee, Fl. 32097

Phone: (904) 225-8280

Fax: (904) 225-8232

Hours: Monday-Friday 8:00am-5:00pm

Services: Free HIV testing with appointment.

WOMEN'S RESOURCE CENTERS OF JACKSONVILLE AND NASSAU

Women's Resource Centers of Jacksonville and Nassau has changed names to Life Solutions. See Life Solutions heading for more information

HEALTH INSURANCE

AFFORDABLE CARE ACT/ "OBAMA" CARE

<https://www.healthcare.gov/>

This is the website to enroll for the new obama healthcare coverage.

FLORIDA KIDCARE

www.floridakidcare.org

Can apply by phone or online

Toll free: 1-888-540-5437

Services: Programs-MediKids (ages 1-4), Healthy Kids (ages 5-18), Children's Medical Services Network (birth to age 18 with special health care needs), and Medicaid (birth to age 18 with other insurance may still qualify). All programs cover doctor visits, check-ups, hospital, surgery, prescriptions, emergencies, vision/hearing, dental, and mental health.

Eligibility: Child must be under age 19, be uninsured, meet income requirements, be a US citizen or qualified non-citizen, not be eligible for Medicaid, not be the dependant of a state employee eligible for health insurance, and not be in a public institution.

FLORIDA MEDICAID

www.dcf.state.fl.us/programs/access

Department of Children and Families

Nassau County Service Center
463688 State Rd. 200
Yulee, FL 32097

Phone: (904) 548-9305

Hours: Monday-Friday 8:00am-5:00pm

Services: Provides medical coverage to low income individuals and families. Must apply online via www.myflorida.com/accessflorida. Can also visit the DCF office and register using their computers.

Eligibility: Based on various factors such as income, family size, special circumstances (pregnancy, disability, etc.), and whether family/individual carries other forms of insurance

MEDICARE

www.medicare.gov

Toll free: 1-800-MEDICARE
(1-800-633-4227)

Services: Health insurance for individuals age 65+, under age 65 with certain disabilities, and any age with End Stage Renal Disease (ESRD). Medicare offers various plans and options.

Eligibility: Determined by a series of questions that can be found online or by calling the listed number. NOTE: Social security information is required; however, if you do not have a social security number due to various reasons (lost card, citizenship, etc.), call the Social Security office at 1-800-772-1213 for Medicare enrollment and eligibility.

**SERVING HEALTH INSURANCE NEEDS OF ELDERS
(S.H.I.N.E.)**

www.floridashine.org

ElderSource

4160 Woodcock Drive 2nd floor
Jacksonville, FL 32207

Phone: 904-391-6699

Toll free: 1-888-242-4464

Fax: 904-391-6601

Info: information@myeldersource.org

Hours: Monday-Friday 7:30am-6:30pm

Services: Florida's insurance assistance program for elderly individuals. Provides insurance counseling and educational materials to elders, caregivers, and family members. Assists individuals in receiving health insurance coverage. ElderSource is the local counseling center for SHINE program. Various locations throughout Duval County, but must contact ElderSource for a listing and to make an appointment at these locations.

HOSPICE

COMMUNITY HOSPICE OF NORTHEAST FLORIDA

www.communityhospice.com

96084 Victoria's Place
Yulee, FL 32097

Phone: (904) 225-0411

Fax: (904) 225-0873

Hours: Monday-Friday 8:00am-5:00pm

Services: Provides specialized end-of-life care for adults and children, and support services for family members. Services provided at home, long-term care facilities, hospitals, and 4 inpatient facilities (located in Jacksonville). Other services include pain management; provides medication, supplies, and equipment; family support; assistance with personal care needs; emotional and spiritual support; arrange for short-term inpatient care; bereavement counseling. NOTE: Yulee Satellite Office staff provides out-patient care.

VITAS INNOVATIVE HOSPICE CARE

www.vitas.com

474262 State Rd. 200
Fernandina Beach, FL 32034

Phone: (904) 491-1759

Fax: (904) 491-1762

Hours: Monday – Friday 8:00 a.m. – 5:00 p.m.

Services: VITAS provides care for patients with a wide range of life-limiting illnesses and support for their family. Care is provided in patients' homes, nursing homes, assisted living facilities, and hospitals. VITAS services include pain management consisting of medications, medical supplies, and equipment. We also provide 24/7/365 access to Telecare (on call staff to coordinate needs after hours). VITAS coordinates inpatient and respite care, provides personal care assistance, and emotional and spiritual support for patients and family members which also includes bereavement counseling.

Eligibility: *VITAS admits and cares for all hospice-appropriate patients referred to us, regardless of their ability to pay.*

HOUSING ASSISTANCE

BARNABAS CENTER

www.barnabasnassau.org

Main Office

1303 Jasmine Street, Suite 101
Fernandina Beach, FL 32034

Phone: (904) 261-7000
Toll free: 1-888-885-6498
Fax: (904) 277-2984

Hours: Monday: 1:00pm - 4:00pm (phones open at 10:00am)
Tuesday -Thursday: 10:00am - 3:00pm
(Appointments are required)

Services: Only assists with partial payments for rent. Provides assistance with Rent/Mortgage (must provide copy of current lease agreement), New Housing (Assistance with first month's rent only, and the rental and electrical deposit must be paid beforehand), Utilities (first referred to other agency for assistance. If help is not available, must provide past due notice from utility company and copy of rental agreement for aid from Barnabas. Deposits and late fees are not paid).

Eligibility: Must have an appointment, show proof of Nassau County residency, proof of income and social security cards for all family members, and confirm changes in situation that require assistance.

Callahan Satellite Office

45237 Mickler St
Callahan, FL 32011

Phone: (904) 507-2680

Hours: Mondays and Wednesdays: 10:00am-1:00pm
Prefer appointments, but walk-ins accepted. Call FB location to schedule appointments.

Services: Assists those with limited transportation by serving as a half-way point for those seeking services from Barnabas. Mainly for speaking with clients and collecting their information to be then transferred to the Main Office in Fernandina Beach. All info is processed at the Main Office.

CEDAR HAVEN TRANSITIONAL HOME

900 Cedar Street
Fernandina Beach, Fl. 32034

Phone: Phone: (904) 699-7477

The Cedar Haven Transitional house seeks to assist women that have been challenged by homelessness in Nassau County with stays of up to 180 days in an effort to assist them towards permanent housing.

FLORIDA COMMUNITY PREVENTION CENTER (Formerly Healing Balm of Northeast Florida)

<http://www.floridacommunityprevention.com/>

Main Office in Yulee:
96098 Victoria's Place
Yulee, FL 32097

Phone: (904) 321-4097
Toll free: 1-866-366-8990
Fax: (904) 321-5668

(Located across from Chick Filet and Yulee Walmart on State Rd 200)

Jacksonville Office (Operation New Hope)
40 East State Street, Suite B
Jacksonville, FL 32202
(Located on corner of Ocean and State Street)

Phone: (904) 353-2508
Fax: (904) 353-2588

Hours: Monday-Friday 8:00am-5:00pm
By appointment only on Saturday and Sunday.

Services: Call for more information regarding housing assistance.

HABITAT FOR HUMANITY
nassauhabitatforhumanity.org

516 South 10th Street, Suite 115
Fernandina Beach, FL 32034

Phone: (904) 277-0600
Info: nhfh@net-magic.net

Hours: Volunteers available Wednesday mornings

Services: Provides adequate housing for Nassau County residents who meet specific housing and income guidelines. Applicants need to be able to pay for their home (i.e. down payment, mortgage payments, participate in building house).

Eligibility: Individual/family must have lived/worked in Nassau County at least 1 year; currently live in unsafe, overcrowded, inadequate, or subsidized housing; currently live in home costing more than 50% of income; and earn income falling within HFH's guidelines.

HOMELESS SHELTERS

FERNANDINA BEACH CHURCH OF CHRIST

1005 South 14th Street
Fernandina Beach, FL 32034

Phone: (904) 277-2517

Services: Provides a cold-night shelter for men, women, and children when the weather reaches 40 degrees or below. Includes dinner, breakfast, and packed lunch.

FIRST ASSEMBLY OF GOD

302 South 14th Street
Fernandina Beach, FL 32034-3218

Phone: (904) 261-6448

Office Hours: Monday-Friday 8:00am-5:00pm
Shelter hours: 24/7

Services: Provides shelter for men, women, and children. Women and children housed separately from men.

HOUSING AUTHORITY
www.hud.gov

1300 Hickory Street
Fernandina Beach, FL 32034

Phone: (904) 261-5051
Fax: (904) 261-8547

Hours: Monday-Thursday 8:30am-5:00pm (closed 12:00-1:00)

Services: Provides 2 programs-Public Housing and Section 8. *Public Housing*-1-4 bedroom units, based on family size; income-based (30% of income goes toward rent). Credit check and background screening required. *Section 8*-House choice voucher allows choice of housing in Nassau County. Same income guidelines; background check required. NOTE: Individual/family does not have to be a Nassau County resident and is open to any family size.

Eligibility: Must pass background screening and credit check

ILRC OF NORTHEAST FLORIDA

www.cilj.com

2709 Art Museum Drive
Jacksonville, FL 32207

Phone: (904) 327-0774
Toll free: 1-888-427-4313

Hours: Monday-Friday 8:00am-5:00pm

Services: Nursing Home Transition provides services to individuals with disabilities residing in nursing homes or other institutional settings, who express the desire to live in non-institutionalized community based settings.

JO HELLER TRANSITION HOUSE

www.qualitylifecenter.com

1238 Nassauville Rd.
Fernandina Beach, FL 32034

Phone: (904) 206-4120

Office Hours: Monday-Friday 8:00am-4:00pm

Staff hours: 24/7

Services: Provides temporary housing for adults (age 18+) with a diagnosed mental illness as they transition from or to a hospital or other care provider. The length of stay is 3-10 days. Afterwards, another form of housing is found for the individual (i.e. assisted living facility). Individuals engage in structured activities during the week in Hilliard and social activities on weekends. Staff is available 24/7, as well as a case manager on site. Individuals taking medication or with prescriptions are helped, but medication is not provided by the facility. Transportation to the facility is available for those who do not have a way of getting there.

NORTHEAST FLORIDA COMMUNITY ACTION AGENCY

www.nfcaa.net

Jasmine Office Center
1303 Jasmine Street, Suite 100
Fernandina Beach, Florida 32034

Phone: (904) 261-0801
Fax: (904) 261-3188
Info: contact@nfcaa.org

Hours: Monday-Friday 8:00am-5:00pm

Services: Provides home repairs that can reduce utility bills, lower energy consumption, and correct structural issues. Repairs comply with local building code standards. Programs include *Weatherization* (repairs to decrease gas/electric bills), *Community Development Block Grant* (correct issues that can threaten health, safety, and security of homeowner), *State Housing Initiatives Partnership* (assistance to repair homes), and *Home Ownership* (financial education and career development to enhance a person's ability to own a home). Also provides emergency assistance with utilities.

Eligibility: Must be "low-income" as specified by the federal government's Poverty Guidelines. *State Housing Initiatives Partnership*-house must qualify as substandard, low-income, single family home and must be occupied by homeowner.

MEDICAL SERVICES

AMELIA URGENT CARE

96279 Brady Point Rd
Fernandina Beach, FL 32034-7076

Phone: (904) 321-0088
Fax: (904) 321-0016

Hours: Monday-Friday 8:00am-8:00pm
Saturdays 9:00am-5:00pm
Sunday 9:00am-2:00pm

Services: Provides urgent care, wellness services, occupational medical services to manage work-related illness and injury, drug screenings, DNA testing, and x-rays. Lab work, screenings, and x-rays are done and read at the facility. Services provided to both insured and uninsured individuals, but this facility does not take Medicaid.

BAPTIST MEDICAL CENTER-NASSAU

www.e-baptisthealth.com

1250 South 18th Street
Fernandina Beach, Florida 32034

Main: (904) 321-3500
Admin: (904) 321-3501
Fax: (904) 321-3511

Services: Part of the Baptist Health System-provides a variety of inpatient and outpatient services such as diagnostics, breast health, cardiopulmonary/sleep lab, clinical lab, maternity care (children who require inpatient pediatric are referred to Wolfson Children's Hospital), hospitalist program (works with local primary care physicians), surgery, rehabilitation, and inpatient care. Also provides 24 hour emergency care.

BARNABAS CENTER

www.barnabasnassau.org

Barnabas Medical Program

1303 Jasmine Street, Suite 101

Fernandina Beach, FL 32034 *This is the new Fernandina location starting February 2014*

Phone: (904) 261-7887

Hours: Urgent Care Clinic: Tues and Thurs evenings with doors opening at 4:45pm for urgent care.

Primary Care Medical Program: Mondays and Wednesdays 9:00am-4:00pm
Tuesdays and Fridays 9:00am-12:00pm

Services: Provides medical services to adults who need urgent care (but does not require hospital emergency room) such as hypertension, wound care, unstable diabetes, and infection treatment (i.e. ear infections, bronchitis, flu). **Does not assist with controlled substances!** NOTE: Women's health clinic offered 2 Wednesday's per month.

Eligibility: Must be Nassau County resident, complete financial review, must have a mental health screening, and cannot have medical insurance including Medicare and Medicaid. *Women's Urgent Care*-Must have a referral from medical clinic. Patients seen 2nd Wednesday of each month.

ILRC OF NORTHEAST FLORIDA

www.cilj.com

2709 Art Museum Drive
Jacksonville, FL 32207

Phone: (904) 327-0774
Toll free: 1-888-427-4313

Hours: Monday-Friday 8:00am-5:00pm

Services: BROOKS Temporary Loan Closet (TLC) loans durable medical equipment for 6 months to individuals with permanent or temporary disabilities. Provides electric wheelchairs, shower chairs, canes, walkers, and more, for free.

Eligibility: Must have a disability (permanent or temporary) and doctor's prescription.

FLORIDA DEPARTMENT OF HEALTH – NASSAU COUNTY

www.nassaucountyhealth.org

Administration

30 South 4th Street
Fernandina Beach, FL 32034-4272

Admin: (904) 548-1800
Healthy Start: (904) 548-1810
Fax: (904) 277-7286

Hours: Monday-Friday 8:00am-5:00pm

Services: *Vital Statistics, Healthy Start, Disease Intervention and Control, and Injury Prevention.* *Vital Statistics* provides birth and death certificates. *Healthy Start*-educational and supportive program that serves pregnant women and families with children under 3. Services include parenting education, childbirth classes, breastfeeding support, psychosocial counseling (individual, couple and family), smoking cessation, inter-conceptual (women's health) services, developmental screenings and case management. Services can be provided in home, at any Health Department site, or any location in Nassau County. Ongoing group services include childbirth classes, a breastfeeding support group, and a parenting group. Other groups are formed as needed (e.g., grief and loss, teen parents). Also have a Daddy Boot Camp program for fathers. *Injury Prevention Program*-provides car seat education and guidance with installation from certified car seat technicians. Car seats are available at a reduced cost for expectant mothers and children on Medicaid. Bike helmets for youth are also available.

Eligibility: Healthy Start clients must reside in Nassau County. They also must be pregnant, have a child under 3, or have been pregnant within the last 2 years.

Callahan Clinic

45377 Mickler Street
PO Box 551
Callahan, FL 32011

Phone: (904) 879-2306
Fax: (904) 879-5250

Hours: Monday-Friday 8:00am-5:00pm (closed daily 12:00-1:00pm)

Services: Offers *primary care* for adults, *immunizations* for adults and children, *family planning*, and *St. Vincent's Mobile Unit*. *Immunizations-VFC* (Vaccines for Children) Program available to children from birth to age 18. Adults can receive Hepatitis B, tetanus, and flu vaccines. *Family planning*-Pregnancy testing available and help with completing Pregnancy Medicaid application as well as Extended Family Planning Medicaid application if eligible. *St. Vincent's Mobile Unit* provides medical care 1 day a month but in a separate facility.

Eligibility: *Primary Care*-adults must enroll and meet financial and medical criteria at the health department. *VFC*-child must be uninsured, on Medicaid, or have insurance that does not cover immunizations. *Family Planning Services* are provided to those seeking a method of contraception (birth control).

Fernandina Beach Clinic

1620 Nectarine Street
PO Box 517 (32035-0517)
Fernandina Beach, FL 32034

Phone: (904) 548-1860
Fax: (904) 277-7283

Hours: Monday-Friday 8:00am-5:00pm (closed daily 12:00-1:00pm)

Services: Offers *primary care* for adults, *immunizations* for adults and children, *family planning*, *TB assessment*, and *St. Vincent's Mobile Unit*. Volunteer specialist doctors available. *Immunizations-VFC* (Vaccines for Children) Program available to children from birth to age 18. Adults can receive Hepatitis B, tetanus, and flu vaccines. *Family planning*-Pregnancy testing available and help with completing Pregnancy Medicaid application as well as Extended Family Planning Medicaid application if eligible. *St. Vincent's Mobile Unit* provides medical care 1 day a month but in a separate facility. *Tobacco Program* works with Baptist Medical Center-Nassau to provide smoking cessation counseling during the day. Evening classes are available.

Eligibility: *Primary Care*-adults must enroll and meet financial and medical criteria at the health department. *VFC*-child must be uninsured, on Medicaid, or have insurance that does not cover immunizations. *Family Planning Services* are provided to those seeking a method of contraception (birth control).

Yulee Clinic
86014 Page's Dairy Road
PO Box 1493 (32041-1493)
Yulee, FL 32097

Phone: (904) 548-1880
Fax: (904) 225-0850

Hours: Monday-Friday 8:00-5:00pm (closed daily 12:00-1:00pm)

Services: Offers *primary care* for adults, *immunizations* for adults and children, and *family planning*. *Immunizations-VFC* (Vaccines for Children) Program available to children from birth to age 18. Adults can receive Hepatitis B, tetanus, and flu vaccines. *Family planning*-Pregnancy testing available and help with completing Pregnancy Medicaid application as well as Extended Family Planning Medicaid application if eligible.

Eligibility: *Primary Care*-adults must enroll and meet financial and medical criteria at the health department. *VFC*-child must be uninsured, on Medicaid, or have insurance that does not cover immunizations. *Family Planning Services* are provided to those seeking a method of contraception (birth control).

FLORIDA COMMUNITY PREVENTION CENTER
(Formerly Healing Balm of Northeast Florida)
<http://www.floridacommunityprevention.com/>

Main Office in Yulee:
96098 Victoria's Place
Yulee, FL 32097
(Located across from Chick Filet and Yulee Walmart on State Rd 200)

Phone: (904) 321-4097
Toll free: 1-866-366-8990
Fax: (904) 321-5668

Jacksonville Office (Operation New Hope)
40 East State Street, Suite B
Jacksonville, FL 32202
(Located on corner of Ocean and State Street)

Phone: (904) 353-2508
Fax: (904) 353-2588

Hours: Monday-Friday 8:00am-5:00pm
By appointment only on Saturday and Sunday.

Services: Provides substance abuse education and awareness, community development capacity building, sexual assault counseling, community health forums, health training and seminars, youth counseling. NOTE: Most services open and free to public.

Also physicals access to other medical and health services. Free confidential HIV/AIDS testing site is open to all. By appointment on Saturday and Sunday.

Eligibility: Accepts Medicaid and accepts others based upon sliding scale fee.

MCPHERSON COUNSELING SERVICES
www.mcphersontrainingconcepts.com

850310 US Hwy 17
Yulee, FL 32097

Phone: (904) 548-0160
Fax: (904) 548-0158
Info: thera@mtcinc1.com

Hours: Monday-Friday 8:00am-5:00pm

Services: A professional treatment, training, and consultation facility which offers the following services: Anger Management, Continuing Education, Drug Testing, Family/Relationship and Individual Counseling, General Intervention, Notary Public, Outpatient Treatment, Parenting Classes, and SAP Services

**STARTING POINT BEHAVIORAL HEALTH
(Formerly Sutton Place)**

www.spbh.org

463142 SR 200 West
Yulee, Fl. 32097

Phone: (904) 225-8280
Fax: (904) 225-8232

Hours: Monday-Friday 8:00am-5:00pm

Services: Private non-profit facility. Provides psychiatric treatment, mental health counseling, and substance abuse services for residents of Nassau County. Provides 24-hour emergency assistance by calling the main number. Not all insurance taken (complete list online). Participant required to complete intake form along with financial form with Intake Specialist prior to appointment.

PHYSICAL ACTIVITY OPPORTUNITIES (FREE)

AMELIA ISLAND RUNNERS

www.ameliaislandrunners.com



Who: All ages, all abilities, always welcome -- and it's always free, with free expert coaching advice available. Walkers welcome too!

What: Group runs and walking groups

When: Wednesdays from 6 to 7 p.m. at FBHS track, 435 Citrona Drive (Fernandina Beach)

DOME HEALING CENTER- FREE YOGA AND MEDITATION CLASSES

<http://dome.domehealingcenter.com/>

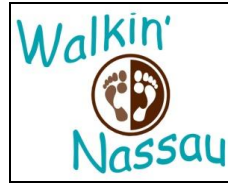
5024 First Coast Highway
Fernandina Beach, FL
(904) 277-3663

Who: All classes open to anyone of any level of student.

What: Free Yoga and Meditation classes. Come learn relaxation, flexibility, and deep breathing techniques. Beginners to Advanced Levels of Amrit, Sivanana, Hatha, Raja, and Meditative Yoga classes. *All Yoga and Mediations classes have been offered free of charge since December 2012. We intend to offer their classes free for as long as we are able.*

WALKIN' NASSAU WALKING CLUB

www.walkinnassau.org



Who: For anyone interested in improving their health while meeting new Walkin' Nassau friends.

What: Walkin' Nassau is a walking club dedicated to bringing walking to everyone! The group was founded by long-time local resident, Ned Tyson, in 2009. Today the club has sanctioned Year Round Events and holds monthly walks. Walkin' Nassau is affiliated with the American Volkssport Association (AVA). The AVA is a national organization with clubs throughout the United States.

Where: Join one of their walk events (Fort Clinch, beaches, and other places in Nassau County)

WALK WITH DOC

Who: Anyone interested in walking!

What: Walk with a Doc is a free, non-profit program for anyone interested in taking steps for their health. Bring friends and loved ones or come alone, and enjoy a refreshing, rejuvenating walk in the park. Physicians, specialists and healthcare professionals from your community will provide support and answer questions. Come out and see what is happening in your community.

When: Usually on third Thursdays each month at 5:15 pm in Nassau County in Callahan.

Callahan Location:

Ewing Park in Callahan, FL

For more information call:

[904-879-4544](tel:904-879-4544)

Lead Physician:

Dr. Kiersten Prince

WALK WITH ME PROGRAM

Who: Anyone interested in walking!

What: Walk With Me Program is a free, community-wide (Nassau) walking program that encourages works sites, agencies, and other community members to start walking groups. While supplies last, the first five participants who sign up from your organization or community group will receive free incentive items (rally towels, water bottles) with the Walk With Me logo. You can also earn bright green, Walk With Me logo shoe laces by walking documenting your first 50 miles on your Walk With Me log. Call the Health Department in Nassau County's Health Education Program for more information: (904) 548-1853.

When: Call to find out about existing walking groups or start your own.



Visit Walk With Me Nassau on facebook!

SUPPORT GROUPS

AL-ANON ALATEEN

www.jaxafg.org

For meeting locations: (904) 350-0600

Services: Provides support for relatives, friends, and family members of alcoholics.

ALCOHOLICS ANONYMOUS

Amelia Room

ameliaroom.com

906 South 7th Street
Fernandina Beach, FL 32034-4022

Phone: (904) 261-8349

Services: Provides alcoholism-related resources and rehab center listings.

Alachua Club

32 N 3rd St
Fernandina Beach, FL 32034

Phone: (904) 261-3580

Services: Provides alcoholism-related resources and rehab center listings

ALZHEIMER'S SUPPORT GROUPS

Life Care Center of Hilliard

3756 West Third Street
Hilliard, FL 32046

Services: Support Group for caregivers. Meets the 2nd Tuesday of each month. Call (904) 879-3684 for more information.

Council on Aging

1367 South 18th Street
Fernandina Beach, FL 32034

Services: Support group for those affected by Alzheimer's and dementia. Meets the 3rd Tuesday of each month. Call (904) 261-0701 for more information.

CANCER SUPPORT GROUPS

Bosom Buddies

Fernandina Beach Police Dept.
1525 Lime St
Fernandina Beach, Florida 32034

Services: Support group for those affected by breast cancer. Meets the 1st Wednesday of each month. Call (904) 225-0067 for more information.

Man to Man

Baptist Medical Center- Nassau
2050 S 18th St
Fernandina Beach, Florida 32034

Services. Support group for those affected by prostate cancer. Call 1-800-227-9954 for more information.

Pink Ribbon Ladies

Baptist Medical Center-Nassau

2050 S 18th St

Fernandina Beach, Florida 32034

Services: Support group for those affected by breast cancer. Meets the 2nd Monday of each month. Call (904) 321-2057 or (904) 261-2976 for more information.

EMPOWERED PARENT

www.ihelpparents.com

NARCOTICS ANONYMOUS

firstcoastna.org

Helpline and meeting locations: (904) 723-LOVE

Contact info: firstcoastna.org/contact.htm

Meeting info: firstcoastna.org/meetings.htm

Services: Provides support for those whom drugs have become a problem.

NATIONAL ALLIANCE FOR THE MENTALLY ILL (NAMI NASSAU COUNTY)

nassau.nami.org

PO Box 15816

Fernandina Beach, FL 32035

Phone: (904) 277-1886

Info: mohnalisa8@aol.com

Services: Support group for those affected by mental illness. Meetings are held monthly at various locations. Check website, call, or email for locations, times, and general information. NOTE: No regular office hours.

TRANSPORTATION SERVICES

ADULT BIKES FOR BARNABAS (ABB)

(904) 261-7000

Bikes for Barnabas!



Services: Adult Bikes for Barnabas (ABB) provides repaired/refurbished used bikes with safety equipment such as good tires and lights.

Eligibility: Barnabas clients who show they have a job or are actively looking for a job are eligible for a free bike. Call (904) 261-7000 for more information.

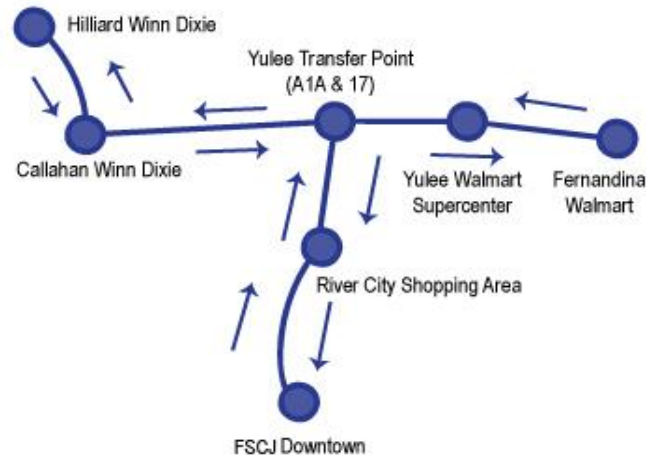
NASSAU EXPRESS TRANSIT or "NET"

<http://coanassau.com/>

This new service, named "Nassau Express Transit" or "NET", is open to the public, does not require pre-registration/qualification, only picks up from central designated collection points, and is limited to seats available (10-14) for each bus. The fare is \$1 each way for passengers, with weekly/monthly bus passes envisioned after the trial period.

The "NET" buses travel a pre-determined route and schedule each weekday from several designated collection points or "NET Bus Stops". These NET buses start very early in the morning, Monday through Friday. One bus begins its route in Fernandina Beach with an intermediate pick-up point in Yulee, and one bus begins in Hilliard with an intermediate pick-up point in Callahan. Both of these NET buses stop at River City Market Place, and then ride on to the JTA Main transfer point in downtown Jacksonville—where connections can be made with Jacksonville's bus and rail systems. The NET buses will also take riders back to Nassau County, returning to Fernandina and Hilliard, at designated times. Planned initial NET service will be an early morning (6 a.m.) trip to Jacksonville, one mid-day trip (11 a.m.-Noon), and finally a late afternoon bus will travel from both Hilliard and Fernandina to Jacksonville, leaving Jacksonville at 6:00 p.m. to return to Nassau County.

This NET service will be operated and controlled by COA Transportation, Council on Aging.
For more information contact Greg Frick, Transportation Manager 261-0701 x 114 or nassautransit@gmail.com.



Transportation Office (Eastside Senior Center)

Phone: (904) 261-0700

Fax: (904) 261-3940

Services: *Medicaid Non-Emergency Transportation* assists Medicaid recipients with getting to their medical appointments. Also provides transportation to those who may be unable to transport themselves because of various reasons (i.e. physical or mental disability, income status, or age).

VETERAN'S ASSISTANCE

BARNABAS – SUPPORTIVE SERVICES FOR VETERAN'S FAMILIES

Phone: (904) 261-7000

DISABLED AMERICAN VETERANS (CHAPTER # 38)

The Peck Center
516 South 10th St
Fernandina Beach, FL 32034

Phone: (904) 556-3363

Hours: Tuesdays 9:00am-2:00pm

Services: Disabled American Veterans Service Officer, Jennett Wilson Baker, will be on duty at the Peck Center, every Tuesday from 9:00am-2:00pm, to provide free, professional assistance to veterans and their families in obtaining benefits and services earned through military service. You can make an appointment by calling (904) 556-3363 or just come to the Peck Center Reception Room.

Eligibility: Free service for veterans and family members

NASSAU COUNTY VETERAN'S SERVICES

Nassau County Courthouse
76347 Veterans Way
Yulee, FL 32097-5404

Phone: (904) 548-4670

Fax: (904) 548-4539

Hours: Monday-Thursday 8:30am-4:00pm
Fridays 8:30am-12:30pm

Services: Can apply for and obtain VA benefits. Resources available to assist individuals with other services.

Eligibility: Vary depending on program individual is applying for. Call for more information.

WEB BASED PRESCRIPTION ASSISTANCE PROGRAMS

Services: These websites offer individuals with the opportunity to obtain their medication at low or no cost. After searching for the medication by name or company, a list of sources, eligibility requirements, and ordering information is displayed.

Eligibility: Requirements differ by organization.

www.rxassist.org www.pparx.org www.needymeds.org www.medicare.gov/pap

YOUTH PROGRAMS

BIG BROTHERS BIG SISTERS

www.bbbsnefl.org

516 South 10th Street Suite 103
Fernandina Beach, FL 32034-3511

Phone: (904) 261-9500
Fax: (904) 261-9583
Info: efoster@bbbsnefl.org

Services: Child is paired with a community volunteer who serves as a mentor and engages in activities, such as sports, team activities, and assistance with school work. Programs: *Community One-to-One*-child and volunteer (Big and Little) meet during month for various activities. *Bigs in Schools*-site-based mentoring program that works to improve academic, social, and behavioral performance through one-to-one interactions at the child's school one hour a week during the year.

BOYS AND GIRLS CLUB OF NASSAU COUNTY

bgcnassau.org

Services: Offers after school program and field trips. After-school program covers 5 core areas: arts, health, life skills, education, and leadership. Children given time to complete homework, or read, and earn points toward incentives.

Eligibility: Child must be between ages 6-18. All participants must complete orientation.

Miller Freedom Center
942259 Old Nassauville Rd
Fernandina Beach, FL 32034-7115

Phone: (904) 261-1075
Fax: (904) 261-8168
Info: info@bgcnassau.org

Hours: Monday-Friday 2:30pm-7:00pm

Fernandina Beach Club
907 11th Street at Indigo
Fernandina Beach, FL, 32034

Phone: (904) 491-9102
Fax: (904) 491-9103
Info: info@bgcnassau.org

Hours: Monday-Friday 1:30pm-7:00pm

CAMP CONSEQUENCE

www.ihelpparents.com

COMMUNITIES IN SCHOOLS OF NASSAU COUNTY

www.cisnassau.org

516 South 10th Street Suite #205
Fernandina Beach, Florida 32034

(904) 321-2000 office
(904) 321-2531 fax

Fernandina Beach Middle: (904) 491-7938 Courtney@cisnassau.org
Fernandina Beach High: (904) 261-5713 Amy@cisnassau.org
Yulee Middle: (904) 225-5116 Lisa@cisnassau.org
Yulee High: (904) 225-8641 Melissa@cisnassau.org
Callahan Middle: (904) 870-3606 Rena@cisnassau.org
Hilliard Middle Senior: (904) 845-1204 Bernita@cisnassau.org
Student Health Services: (904) 349-9952 Trevor@cisnassau.org
Community Connections: (904) 321-2000 Terrie@cisnassau.org

About: CIS brings resources into the schools where they are needed most; before, during, and after school. CIS staff is based at each school to provide and/ or connect students with resources, academic coaches, and volunteers that relieve obstacles to learning. Executive Director: Susan Milana.

Eligibility: Nassau County youth Grades 6-12

Hours: Free services are available before, during, and after school hours directly at school sites.

Services:

- Case Management & Individual Coaching
- Homeless/Unaccompanied Youth
- Students referred by school guidance or parent
- Coordination of referrals to other agencies
- Academic Remediation & Tutoring Before, During & After School (Summer Remediation YMS & FBMS)
- Life Skill Workshops and individual coaching (self-esteem, positive choices, communication, conflict resolution, etc.)
- Career Exploration/Workforce Readiness/Interviewing Skills @HMSHS
- Clothes closets, family meal celebrations, school supplies, and special enrichment activities

DANIEL

www.danielkids.org



4203 Southpoint Boulevard
Jacksonville, FL 32216

Phone: (904) 296-1055
Fax: (904) 448-7700

Services: Community mental health, outpatient therapy, residential treatment, delinquency intervention, independent living, foster care, and adoption services.

Eligibility: For our mental health programs (community mental health and residential treatment) we accept males and females ages 5-17 years old with the following insurances: Medicaid, Sunshine State Health Plan, First Coast Advantage, Magellan Behavioral Health, CMS/Ped-I-Care Title 19 and Title 21. We do not accept any form of private insurance.

Office Hours: Monday-Friday from 8:00am-5:00PM. No walk-ins. All clients must call to set up an appointment.

EMPOWERED PARENT
www.ihelpparents.com

HEAD START
ecs4kids.org/head_start.html

Services: Comprehensive pre-school and after-school programs for children ages 3-5 and families who are income eligible with the goal of children being ready for school. NOTE: Includes children with disabilities and special needs. Programs/services include medical, dental, mental health, nutrition, and parental involvement. Parents are encouraged to be involved in activities. Children receive developmental screenings, and vision and hearing exams with referral and follow-up. Dental exams provided as needed.

Eligibility: Based on various requirements (i.e. age, income, etc.). Call for more information.

To enroll, call (904) 491-3631

Callahan Head Start
45089 Third Avenue
Callahan, FL 32011

Phone: (904) 879-5019
Fax: (904)879-5177

Hours: Monday-Friday 7:30am-5:00pm

Peck Head Start
516 South 10th Street Suite 100
Fernandina Beach, FL 32034

Phone: (904) 491-3630
Fax: (904) 491-3632

Hours: Monday-Friday 8:00am-5:00pm

NASSAU COUNTY PARKS AND RECREATION
www.nassaucountyfl.com/index.aspx?nid=267

45195 Musselwhite Rd
Callahan, FL 32011

Phone: (904) 548-4689
Phone: (904) 879-3751
Fax: (904) 548-4687

Hours: Monday-Friday 8:00am-5:00pm

Services: Responsible for maintaining, repairing, and supervising Nassau County parks boat ramps, and sports complexes. A complete list available on website-most free and open to public. Also holds county-wide activity programs such as Little League, Pop Warner Football, Youth Soccer, and Tennis. Contact P&R for information, and to register.

NORTHEAST FLORIDA COMMUNITY ACTION AGENCY
www.nfcaa.net

Jasmine Office Center
1303 Jasmine St, Suite 100
Fernandina Beach, Florida 32034

Phone: (904) 261-0801
Fax: (904) 261-3188
Info: contact@nfcaa.org

Hours: Monday-Friday 8:00am-5:00pm

Services: *Youth In Action*-After school activities, summer programs, homework assistance, and positive crime prevention education. *Data Busters*-Teaches 14-18 year olds computer and work skills, and partners with local businesses to offer the youth a paying summer job along with transportation to and from work.

Eligibility: Must be "low-income" as specified by the federal government's Poverty Guidelines. *Youth In Action*-Youth must be age 8-18. *Data Busters*-Youth must be 14-18 years old.

SALVATION ARMY HOPE HOUSE

410 S 9th Street
Fernandina Beach, FL 32034-3623

Phone: (904) 321-0435
Fax: (904) 277-8019

Office Hours: 9:30am-6:00pm (closed 12:00-1:00)

Services: Offers services for youth, including *Camp Keystone*, a week-long summer camp for children from low-income families, and *Stuff the Bus*, which provides school supplies and backpacks for children prior to the start of the school year

SAFE KIDS
(904) 202-4203

SEXUAL ASSAULT (RAPE)
1(888) 956-7273

SUICIDE LIFELINE (24 HOURS)
1(800) 273-TALK

YMCA
www.firstcoastymca.org

Services: Offers *PrYme Time*, a county-wide before- and after- school program during the school year available in all elementary schools, youth sports, summer camp, and summer pool programs. *Youth Fit for Life:* After-school fitness program for youth (part of PrYme Time). May register for programs online or in person.

McArthur Family YMCA
1915 Citrona Dr.
Fernandina Beach, FL 32034

Phone: (904) 261-1080
Info: akienle@FirstCoastYMCA.org

Hours: Monday-Thursday 5:30am-9:00pm
Fridays 5:30am-8:00pm
Saturdays 8:00am-5:00pm
Sundays 1:00pm-5:00pm

ADDITIONAL RESOURCES

Name of Organization: _____

Address: _____

Phone: _____

Fax: _____

Services: _____

Name of Organization: _____

Address: _____

Phone: _____

Fax: _____

Services: _____

Name of Organization: _____

Address: _____

Phone: _____

Fax: _____

Services: _____

Name of Organization:

Address:

Phone:

Fax:

Services:

Name of Organization:

Address:

Phone:

Fax:

Services:

Name of Organization:

Address:

Phone:

Fax:

Services:

Name of Organization:

Address:

Phone:

Fax:

Services:

Name of Organization:

Address:

Phone:

Fax:

Services:
