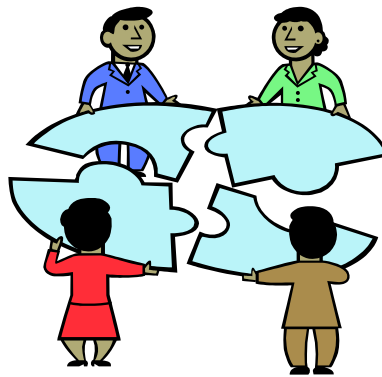


# Florida Department of Health Nassau County Community Resource Guide



Updated January 2020

**About the Community Resource Guide:**

The Nassau County Resource Guide is a referral tool to assist you in linking your clients to various organizations that offer assistance based on their needs. The information furnished in this resource guide is not meant to be a comprehensive listing of every service throughout Nassau County. Inclusion of these guides/links does not represent endorsement of the organization or its program, nor does exclusion represent lack of endorsement.

**The most up to date resource guide can be located at:**

<http://nassau.floridahealth.gov/programs-and-services/wellness-programs/resource-guides/index.html>

## ADULT EDUCATION

### ADULT EDUCATION AND DROP OUT PREVENTION

Services: Nassau County Adult Education offers GED Prep classes at four locations on a flexible schedule. For current class and testing schedules, check out the links on the following website:

<https://www.nassau.k12.fl.us/Domain/42>

For additional information, contact (904) 548-1750

## EMERGENCY CONTACT INFORMATION

### DIAL 9-1-1 FOR ALL EMERGENCIES

#### NASSAU COUNTY EMERGENCY MANAGEMENT SERVICES

<http://www.nassaucountyfl.com/370/Emergency-Management>

77150 Citizen's Circle  
Yulee, FL 32097

Phone: (904) 548-0900  
Toll free: 1-800-958-3494  
Fax: (904) 548-4194

**Hours:** Monday-Friday 8:00am-5:00pm

Info: [ncem@nassaucountyfl.com](mailto:ncem@nassaucountyfl.com)

**Services:** Offers information related to disaster and emergency preparedness. Offers tips for being prepared, weather updates, evacuation routes, emergency shelter information, and more.

### CONTACT INFORMATION-FIRE DEPARTMENT/SHERIFF'S OFFICE/POLICE DEPT

#### BRYCEVILLE (9-1-1)

Fire: (904) 266-2452  
Sheriff: (904) 353-7072

#### CALLAHAN (9-1-1)

Fire: (904) 879-3577  
Sheriff: (904) 879-3853

#### FERNANDINA BEACH (9-1-1)

Address: 1525 Lime St., Fernandina Beach, FL 32034

Fire: (904) 277-7331  
Police: (904) 277-7342

#### HILLIARD (9-1-1)

Fire: (904) 845-3555  
Sheriff: (904) 845-7089

#### YULEE (9-1-1)

Fire: (904) 491-7525  
Sheriff: (904) 548-4000

## CHILDCARE/PRESCHOOL

### EPISCOPAL CHILDREN'S SERVICES

[www.ecs4kids.org](http://www.ecs4kids.org)

#### **Nassau County Office**

c/o Worksource  
96042 Lofton Square Court  
Yulee, FL. 32097

Phone: (904) 432-0009 ext 2626

Fax: (904) 277-7219

**Office hours:** Monday-Friday 8:00am-5:00pm

**Walk-in hours:** Monday-Thursday 9:00am-11:00am

**Services:** *Child Care Resource and Referral Program*-provides information about childcare providers (school-based, church affiliated, special needs care, weekend care, before and after school programs, and summer camps). Information is obtained by calling the office, visiting in person, or via website. To register your child for VPK (Voluntary Pre-K), apply online at <https://spe.schoolreadiness.org/pe/> or call the Nassau County Office.

## CLOTHING ASSISTANCE

### **BARNABAS CENTER**

[www.barnabasnassau.org](http://www.barnabasnassau.org)

#### **Main Office**

1303 Jasmine Street, Suite 101  
Fernandina Beach, FL 32034

Phone: (904) 261-7000

Toll free: 1-888-885-6498

Fax: (904) 277-2984

**Hours:** Monday: 1:00pm - 4:00pm (phones open at 10:00am)

Tuesday -Thursday: 10:00am - 3:00pm

(Appointments are required)

**Services:** Clothing/Furnishings (referral to "New to You" Resale Store for qualified clients)

**Eligibility:** Must have an appointment, show proof of Nassau County residency, proof of income and social security cards for all family members, and confirm changes in situation that require assistance.

#### **"New to You" Resale Store**

930 South 14th Street  
Fernandina Beach, FL 32034

Phone: (904) 321-2334

**Hours:** Monday – Saturday 9:30am-5pm

**Services:** Provides donated clothing, furniture, appliances, jewelry, and sporting equipment. Must have a referral from Main Office.

### HUBBARD HOUSE THRIFT STORE

6629 Beach Boulevard  
Jacksonville, FL 32216

Phone: (904) 400-6333  
Fax: (904) 855-4026

**Hours:** Monday-Saturday 10:00am-6:00pm

**Services:** Provides clothing, household items, and furniture to persons and clients of Hubbard House Outreach Center.

### SALVATION ARMY HOPE HOUSE

410 S 9th Street  
Fernandina Beach, FL 32034-3623

Phone: (904) 321-0435  
Fax: (904) 277-8019

**Office Hours:** Monday-Friday 10:00am-5:00pm (closed 12:00-1:00)

**Clothes Closet Hours:** Mondays, Wednesdays, and Fridays 10:00am-4:00pm (closed 12:00-1:00)

**Services:** Provides free emergency clothing to anyone in need.

### THE PURPLE DOVE RESALE CENTER (MICAH'S PLACE)

<http://www.micahsplace.org/purple-dove-resale/>

Purple Dove Resale Center  
474311 East SR 200  
Fernandina Beach, Florida 32034  
(next to Dicks Wings)

Phone: (904) 261-5227  
Fax: (904) 491-6362  
Info: [www.micahsplace.org](http://www.micahsplace.org)

Purple Dove Resale Store  
450061 SR 200  
Callahan, FL 32011

Phone: (904) 879-6270

**Hours:** Monday - Friday 10:00am to 5:00pm  
Saturdays - 9:00 am to 5:00pm

**Services:** Provides upscale resale furniture, household items, ladies fine apparel, as well as men's & children's clothing. Items created by survivors of domestic violence sometimes available on consignment. Information about domestic violence services in Nassau County available. Micah's Place participants eligible for free items (referral needed).

## CRISIS SERVICES

### **BARNABAS CENTER (Crisis Assistance)**

[www.barnabasnassau.org](http://www.barnabasnassau.org)

#### **Main Office**

1303 Jasmine Street, Suite 101  
Fernandina Beach, FL 32034

Phone: (904) 261-7000  
Toll free: 1-888-885-6498  
Fax: (904) 277-2984

Barnabas Crisis Assistance Services are listed under the **Clothing, Crisis Services, Housing, Medical Services, Dental Services, Transportation, and Veteran Sections** of this directory.

### **CHILD ABUSE HOTLINE**

*Report child abuse in Florida: 1-800-962-2873*

### **CHILD ADVOCATE RAPID RESPONSE TEAM C.A.R.R.T.**

#### **Nassau County Full Service School**

86207 Felmor Road  
Yulee, FL 32097-5303

Phone: (904) 277-9063  
Fax: (904) 548-0439

**Hours:** Monday-Friday 8:00am-5:00pm

**Services:** Provides support for children who are either a victim of a crime or have witnessed a crime. Assistance includes crisis intervention, emotional support, criminal justice information, court support, and emergency assistance. Assistance is provided at various locations, including the child's school and home.

### **DAY DROP-IN CENTER (DDC) OF NASSAU COUNTY**

Phone: (904)261-9760

Fernandina Beach Church of Christ Building (facing 14<sup>th</sup> St)  
1005 South 14th Street

**Mission Statement:** To provide a safe, compassionate and supportive environment in which people who are experiencing homelessness or who are at risk of homelessness are welcome and able to access appropriate facilities, services, and resources.

**Sponsoring Organization:** The Coalition for the Homeless of Nassau County in partnership with other local agencies and organizations with the participation of local volunteers

**Hours:** The center will be open from 10am - 2pm, twice per week.

**Services:** include, but are not limited to, the following;

- Respite from the heat/cold
- Access to snacks and water
- Access to toilet facilities
- Access to hot showers and laundry facilities
- An address/phone number and place to receive mail and store important documents securely

- Assisted access to telephones and computers for the purpose of researching, applying for and acquiring identification, benefits, appropriate assistance, and/or employment
- Access to information regarding available community, state, and federal services
- Referrals to local service providers
- First-level medical checkups for blood pressure and sugar level
- Access to caring, concerned volunteers who are skilled at listening to the needs of clients and able to discern how best to meet those needs

### **DEPARTMENT OF CHILDREN AND FAMILIES**

<http://www.myflfamilies.com/>

463688 State Road 200 # 3  
Yulee, FL 32097-0301

Phone: (904) 557-9100  
(866) 762-2237

**Hours:** Monday-Friday 8:00am-5:00pm

**Services:** Investigates child abuse cases and provides referrals

### **FAMILY SUPPORT SERVICES OF NORTH FLORIDA (FSSNF)**

[Fssjax.org](http://Fssjax.org)

Info: [info@FSSNF.org](mailto:info@FSSNF.org)

After hours emergency line: 904.421.5818

TDD: 1-800-955-877

Yulee Location:  
96016 Lofton Square Court  
Yulee, FL 32097  
(located at Lofton Square shopping center at State RD 200 and Amelia Concourse)

Phone: (904) 225-5347

Jacksonville location:  
1300 Riverplace Boulevard  
Suite 700  
Jacksonville, FL 32207 (Southbank area, near Main Street Bridge)

Phone: (904) 421-5800

**About:** Family Support Services of North Florida (FSSNF) is a non-profit organization created to perform the duties of Lead Agency in the Community Based Care project in Duval County and Nassau County, Florida. As the Lead Agency, FSSNF provides all child protection services previously performed by the Department of Children and Families (DCF).

**Services:** Provides adoption, foster care, family preservation and independent living.

### **FLORIDA COMMUNITY PREVENTION CENTER (Formerly Healing Balm of Northeast Florida)**

<http://www.floridacommunityprevention.com/>

Main Office in Yulee:  
96098 Victoria's Place  
Yulee, FL 32097  
(Located across from Chick Filet and Yulee Walmart on State Rd 200)

Phone: (904) 321-4097  
Toll free: 1-866-366-8990  
Fax: (904) 321-5668

Jacksonville Office (Operation New Hope)  
40 East State Street, Suite B  
Jacksonville, FL 32202

Phone: (904) 353-2508  
Fax: (904) 353-2588

Located on corner of Ocean and State Street)

Hours: Monday-Friday 8:00am-5:00pm  
By appointment only on Saturday and Sunday.

Services: Provides substance abuse education and awareness, community development capacity building, sexual assault counseling, community health forums including anger management, health training and seminars, youth counseling. NOTE: Most services open and free to public.

Also offers physicals and access to other medical and health services. Free confidential HIV/AIDS testing site is open to all. By appointment on Saturday and Sunday.

Eligibility: Accepts Medicaid and accepts others based upon sliding scale fee

### **FLORIDA SUICIDE AND CRISIS HOTLINE**

<http://www.suicide.org/hotlines/florida-suicide-hotlines.html>

*Phone: (904) 632-0600 or (800) 273-TALK  
Toll free: 1-800-346-6185  
United Way 211*

**Services:** Provides suicide and crisis counseling over the phone.

### **GUARDIAN AD LITEM**

[www.guardianadlitem.org](http://www.guardianadlitem.org)

Fourth Judicial Circuit  
214 N. Hogan Street, 6<sup>th</sup> Floor, Suite 6004  
Jacksonville, Florida 32202

Phone: (904) 548-4903  
Fax: (904) 255-8356

**Hours:** Monday-Friday 8:00am-5:00pm

**Services:** Provides legal help for abused and neglected children by working with volunteers and pro bono attorneys.

### **HUBBARD HOUSE OUTREACH CENTER**

[www.hubbardhouse.org](http://www.hubbardhouse.org)

P.O. Box 4909  
Jacksonville, FL 32201

Admin: (904) 354-0076  
24-hour Toll free: 1-800-500-1119  
24-hour hotline: (904) 354-3114  
Info: [hubbardhouse@hubbardhouse.org](mailto:hubbardhouse@hubbardhouse.org)

**Services:** Provides temporary housing for male and female victims of domestic violence. 24-hour staff provides physical and emotional support. Other services include individual and group counseling for adults and children, comprehensive victim advocacy, licensed therapeutic child care, and before- and after- school care for school-aged children.

**Eligibility:** Must be a victim of domestic violence.



**MICAH'S PLACE**  
[www.micahsplace.org](http://www.micahsplace.org)

P. O. Box 16287  
Fernandina Beach, FL 32035

Admin: (904) 491-6364  
Fax: (904) 491-6362  
24-hour hotline: (907) 225-9979  
24-hour hotline: 1-800-500-1119  
Info: [executivedirector@micahsplace.org](mailto:executivedirector@micahsplace.org)

**Services:** Provides prevention and intervention services to victims of domestic violence. Offers a safe and confidential shelter, advocacy, 24-hour hotline, counseling, legal services (includes injunction for protection), and support groups.

**Eligibility:** Must be a victim of domestic violence. NOTE: Although Micah's Place only houses women and children, men are also helped and referred to a shelter that houses men (closest: Hubbard House in Duval County-check under "Services in Jacksonville" for more information).

**SAFE KIDS**  
(904) 202-4302

**SEXUAL ASSAULT (RAPE)**  
1(888) 956-7273

**STARTING POINT BEHAVIORAL HEALTH**  
**(Previously Sutton Place)**  
[www.spbh.org](http://www.spbh.org)

463142 SR 200 West  
Yulee, FL 32097

Phone: (904) 225-8280  
Fax: (904) 225-9125

**Hours:** Monday-Friday 8:00am-5:00pm

**Services:** Free HIV testing with appointment.

**SUICIDE LIFELINE (24 HOURS)**  
1(800) 273-TALK  
(8255)

**United Way's 211 Help Line**  
211 is an information line and suicide/crisis intervention line  
Phone: Call 211 from any land line or cell phone

**Services:** Operators provide referrals and information on various topics. Provides the following services: medical & health services, mental health and substance abuse services, food, shelter & clothing, support groups, information about emergencies, such as hurricane shelter locations, services for people with disabilities, HIV/AIDS info and testing, RealSense locations for tax preparation and savings plans, adult, child, and family services, help for victims of abuse or crime, financial assistance, problem-solving for people unsure of their needs.

**Eligibility:** It is free and open to all

## **VICTIM SERVICES ADVOCATE**

[www.nassaucountysheriff.com](http://www.nassaucountysheriff.com)

76001 Bobby Moore Circle  
Yulee, FL 32097

Victim Advocate Phone: (904) 548-4099  
After hours: call Sheriff's office

**Hours:** Monday-Friday 8:00am-5:00pm (on call 24 hours)

**Services:** Advocate provides assistance for victims and witnesses of crimes. The advocate addresses physical and psychological well-being by providing crisis intervention, emotional support, criminal justice information, court support, and emergency assistance.

## **WOMEN'S CENTER OF JACKSONVILLE**

[www.womenscenterofjax.org](http://www.womenscenterofjax.org)

For more information, email: [mail@womenscenterofjax.org](mailto:mail@womenscenterofjax.org)

### **Rape Recovery Team**

24 Hour Rape Crisis Hotline: 904-721-7273

**Yulee Phone: (904)206-2993**

5644 Colcord  
Jacksonville FL, 32211

Jacksonville Phone: (904) 722-3000  
Fax: (904) 722-3100

**Services:** The Rape Recovery Team (RRT) responds quickly and compassionately to survivors of sexual violence whether or not they have chosen to report the crime to police. Services are available to survivors of all genders in Duval, Nassau and Baker Counties. Our approach to support is empowerment-based, providing access to information and resources so that survivors can make the choice they feel is best for them. Communications with RRT advocates are confidential.

The RRT can offer support through the following services for survivors and their loved ones:

- 24-hour hotline answered by an advocate who can offer crisis intervention, information and referrals
- 24-hour response to survivors who would like a forensic examination
- Information to assist survivors in understanding their rights and options
- Advocacy and accompaniment for medical appointments and criminal justice proceedings
- Information and referral for community resources
- Advocate-facilitated peer support groups
- Referral for mental health counseling services offered by the Women Center's Counseling Department

For those who choose to report, the RRT works collaboratively with the Sexual Assault Response Center, the State Attorney's Office and local Sheriff's Offices and Police Departments throughout Duval, Baker and Nassau Counties to ensure that survivors receive the most comprehensive services available. For those choosing NOT to report, we have an extensive network of community partners who assist us in assuring a network of care for our clients, so no individual faces this alone.

## DENTAL SERVICES

### BARNABAS CENTER

[www.barnabasnassau.org](http://www.barnabasnassau.org)

#### Barnabas Dental Program

1303 Jasmine Street, Suite 101  
(888) 885-6498  
Fernandina Beach, FL 32034

Phone: (904) 261-9988

**Hours:** Tuesday – Thursday 8:00am-4:00pm

**Services:** Includes, exams, fillings, x-rays, extractions, dentures, emergency visits, and cleanings.

**Eligibility:** Must be at least 21 years old, Nassau County resident, have social security card for every member of family, proof of income, and Medicaid card if applicable. Photo ID required.

### FL DEPARTMENT OF HEALTH in NASSAU COUNTY

<http://nassau.floridahealth.gov/>

**Services:** Serves children ages 1-20 and adults. Wide range of services provided. NOTE: No restorative work on 1-2 year olds. Proper child oral hygiene education given to parents during visit.

**Eligibility:** Child must be on state insurance (i.e. Medicaid, Healthy Kids) or self-paid. Limited services for adults based upon specific programs. Referrals available for uninsured.

#### Hilliard Dental Clinic

37203 Pecan Street  
PO Box 595  
Hilliard, FL 32046

Phone: (904) 320-6020

Fax: (904) 428-5635

**Hours:** Mondays and Wednesdays, 8:00-5:00pm (closed daily 12:00-1:00)

#### Nassau County Full Service School Dental Clinic

86207 Felmor Road  
Yulee, FL 32097-5303

Phone: (904) 875-6090

Fax: (904) 428-5635

**Hours:** Monday-Thurs 8:00am-5:00pm (closed daily 12:00-1:00)  
Friday 8:00-12:00pm

## ELDER SERVICES

### COUNCIL ON AGING

<http://www.nassaucountycoa.org/>

**Services:** Provides Adult Day Healthcare (NOT provided at Westside Senior Center), Meals on Wheels, and In-home services including minor house maintenance and repair, respite care, and personal care.

**Eligibility:** Must be age 60+, and must call a senior center to speak to a case worker.

**Hours:** Monday-Friday 8:00am-5:00pm

**Eastside Senior Center**  
1367 South 18<sup>th</sup> Street  
Fernandina Beach, FL 32034

Phone: (904) 261-0701  
Fax: (904) 261-0704

**Westside Senior Center**  
37002 Ingham Road  
Hilliard, FL 32046

Phone: (904) 845-3331  
Fax: (904) 845-4491

**ELDERSOURCE**  
[www.myeldersource.org](http://www.myeldersource.org)

4160 Woodcock Drive 2nd floor  
Jacksonville, FL 32207

Phone: 904-391-6600  
Toll free: 1-888-242-4464  
Fax: 904-391-6601  
Info: [information@myeldersource.org](mailto:information@myeldersource.org)

**Hours:** Monday-Friday 7:30am-6:30pm

**Services:** Elders, caregivers, and the general public can obtain information, referrals, and assistance relating to aging issues. Includes in-home, senior center and community services; caregiver support; information and education; health insurance counseling; transportation; legal; nutrition programs; SHINE (Serving Health Insurance Needs of Elders); and more.

**Safe Mobility for Life (SMFL) Program**  
<https://findarideflorida.org>

Services: FindaRideFlorida.org is an online listing of transportation service providers in all of Florida's 67 counties. Service is available to anyone and providers are selected based on where you are travelling from and to, the purpose of the trip (e.g. education, work, medical, other), and do you have additional needs (e.g. escort to and from vehicle or accommodation for wheelchair)

**EMPLOYMENT ASSISTANCE**

**DAY DROP-IN CENTER (DDC) OF NASSAU COUNTY**

Fernandina Beach Church of Christ Building (facing S. 14<sup>th</sup> St)  
For info, contact the Coalition for the Homeless:  
1005 South 14th Street

[info@chnassau.com](mailto:info@chnassau.com)

**Mission Statement:** To provide a safe, compassionate and supportive environment in which people who are experiencing homelessness or who are at risk of homelessness are welcome and able to access appropriate facilities, services, and resources.

**Sponsoring Organization:** The Coalition for the Homeless of Nassau County in partnership with other local agencies and organizations with the participation of local volunteers

**Hours:** The center will be open from 10am - 2pm, twice per week.

Services: include, but are not limited to, the following;

- Respite from the heat/cold
- Access to snacks and water
- Access to toilet facilities
- Access to hot showers and laundry facilities
- An address/phone number and place to receive mail and store important documents securely
- Assisted access to telephones and computers for the purpose of researching, applying for and acquiring identification, benefits, appropriate assistance, and/or employment
- Access to information regarding available community, state, and federal services
- Referrals to local service providers
- First-level medical checkups for blood pressure and sugar level
- Access to caring, concerned volunteers who are skilled at listening to the needs of clients and able to discern how best to meet those needs

### **GOODWILL- JOB JUNCTION**

[www.goodwilljax.org](http://www.goodwilljax.org)

6841 Blanding Blvd  
Jacksonville, FL 32244

Phone: (904) 779-2894

**Hours:** Monday-Friday 8:30am-5:00pm

**Services:** Free employment services to those seeking employment such as workshops (computer use, resume writing, soft skills), career counseling, on-site interviews with employers, career fairs, job listings, and Hello Line for those without a phone to contact and be contacted by employers for pre-employment purposes. Check website for more locations.

### **ILRC OF NORTHEAST FLORIDA**

[www.theilrc.org](http://www.theilrc.org)

2709 Art Museum Drive  
Jacksonville, FL 32207

Phone: (904) 399-8484  
Toll free: 1-888-427-4313

**Hours:** Monday-Friday 8:00am-5:00pm

**Services:** *Employment Services Department* offers resume building classes, computer skills trainings, benefits planning, mock interviews, job placement, advocacy and money smart classes. *The High School/High Tech (HS/HT) Program* is a community-based partnership made up of students, parents and caregivers, businesses, educators, and rehabilitation professionals. The purpose is to provide high school students with all types of disabilities the opportunity to explore jobs and postsecondary education leading to technology-related careers.

### **JOBCORPS**

[jacksonville.jobcorps.gov](http://jacksonville.jobcorps.gov)

4811 Payne Stewart Drive  
Jacksonville, FL 32209

Phone: (904) 360-8200  
Toll free: 1-800-733-5627  
Fax: (904) 632-5498

**Hours:** Monday-Friday 8:00am-5:00pm

**Services:** No-cost academic and career technical training programs for individuals age 16-24. Academic training includes reading and math, independent living, employability skills, and GED/High School Diploma attainment. Career technical training is offered in various areas. Center provides allowance, housing, meals, and graduate benefits.

**Eligibility:** Must be age 16-24, and be in a low-income household (specified by the admissions counselor). Cannot have a criminal record, and if so, case needs to be closed at least one year. There are also suitability requirements that are based on an interview with an admissions counselor.

### **NORTHEAST FLORIDA COMMUNITY ACTION AGENCY**

[www.nfcaa.net](http://www.nfcaa.net)

Jasmine Office Center *Phone:*  
1303 Jasmine St, Suite 100  
Fernandina Beach, Florida 32034

Phone: (904) 261-0801  
Fax: (904) 261-3188  
Info: [contact@nfcaa.org](mailto:contact@nfcaa.org)

**Hours:** Monday-Friday 8:00am-5:00pm

**Services:** Family Self Sufficiency Program (FSSP) provides employment, educational, and asset building services.

**Eligibility:** Must be enrolled in FSSP Program. Must be "low-income" as specified by the federal government's Poverty Guidelines.

### **WORKSOURCE**

[www.worksourcefl.com](http://www.worksourcefl.com)

96042 Lofton Square Court  
Yulee, FL 32097

Phone: (904) 432-0009  
Fax: (904) 277-7219

**Hours:** Monday-Friday 8:00am-5:00pm

**Services:** Provides education, training, and career services such as resume writing workshops, interviewing skills, and computer education. Works with local businesses who want to post job listings. Individuals can sign up for unemployment at this location.

## **FOOD ASSISTANCE**

**Fernandina Beach Church of Christ**  
1005 South 14<sup>th</sup> Street  
Fernandina Beach, FL 32034

Phone: (904) 277-2517

**Hours:** Monday-Friday 8:00am-5:00pm

**Services:** Provides quality food at very low cost. Food is purchased in advance with cash, credit card, or food stamps. Call to place an order and for pick-up information. This organization also provides a food pantry for those requiring emergency food assistance. Visit [www.cocfb.org/app/](http://www.cocfb.org/app/) for more information.

**BARNABAS CENTER**  
[www.BarnabasNassau.org](http://www.BarnabasNassau.org)

**Main Office**

1303 Jasmine Street, Suite 101  
Fernandina Beach, FL 32034

**Hours:** Monday: 1:00pm - 4:00pm (phones open at 10:00am)  
Tuesday -Thursday: 10:00am - 3:00pm  
Friday 10:00 am – noon

Phone: (904) 261-7000  
Toll free: 1-888-885-6498  
Fax: (904) 277-2984

**Services:** Food pantry is available for those in crisis. Client may be eligible once every 30 days with proper documentation. Encouraged to apply for food stamps. For more information, contact Barnabas at 261-7000 or email [info@barnabasnassau.org](mailto:info@barnabasnassau.org).

**Eligibility:** Show proof of Nassau County residency

**COALITION FOR THE HOMELESS**

Mailing Address  
P.O. Box 16123  
Fernandina Beach, FL 32035

email: [info@chnassau.org](mailto:info@chnassau.org)

**The Coalition for the Homeless of Nassau County, Florida**, brings together more than 100 agencies, organizations and individuals working together to prevent homelessness and improve conditions for those experiencing homelessness.

Two following two Soup Kitchens are available through the Coalition for the Homeless:

**Fernandina Interfaith Dinner Network** at Hope House/Salvation Army serves meals to anyone in need 4 nights per week; Mon, Tues, Thurs, Fri. from 5 - 7 pm

**Yulee Interfaith Dinner Network** - Gracie's Kitchen - behind Old Yulee Middle School on US Hwy. 17 and Pages Dairy Rd serves 2 nights per week; Tues and Thurs, and the 2nd Monday (with the remaining Mondays forthcoming soon) from 5 - 7 pm

A **Soup Train** also delivers 2 healthy frozen meals per week to seniors in need who have been identified in our county and are not being serviced by Meals on Wheels.

**Day Drop-in Center (DDC) of Nassau County**

Fernandina Beach Church of Christ Building (facing S. 14<sup>th</sup> St)  
For info, contact the Coalition for the Homeless:  
1005 South 14th Street  
Fernandina Beach, FL

Info: [info@chnassau.org](mailto:info@chnassau.org)

**Mission Statement:** To provide a safe, compassionate and supportive environment in which people who are experiencing homelessness or who are at risk of homelessness are welcome and able to access appropriate facilities, services, and resources.

**Sponsoring Organization:** The Coalition for the Homeless of Nassau County in partnership with other local agencies and organizations with the participation of local volunteers

**Hours:** The center will be open from 10am - 2pm, twice per week.

**Services:** include, but are not limited to, the following;

- Respite from the heat/cold
- Access to snacks and water
- Access to hot showers, toilet, and laundry facilities
- An address/phone number and place to receive mail and store important documents securely
- Assisted access to telephones and computers for the purpose of researching, applying for and acquiring identification, benefits, appropriate assistance, and/or employment
- Access to information regarding available community, state, and federal services
- Referrals to local service providers
- First-level medical checkups for blood pressure and sugar level
- Access to caring, concerned volunteers who are skilled at listening to the needs of clients and able to discern how best to meet those needs

### **COUNCIL ON AGING**

[www.seniorcenteramelia.com](http://www.seniorcenteramelia.com)

#### **Eastside Senior Center**

1367 South 18<sup>th</sup> Street  
Fernandina Beach, FL 32034

**Hours:** Monday-Friday 8:00am-5:00pm

Phone: (904) 261-0701

Fax: (904) 261-0704

**Services:** Meals on Wheels provides nutritionally balanced meals for the elderly that are delivered to the individual's home.

**Eligibility:** Must be age 60+ and contact the senior center to speak to a case manager.

### **THE FOOD ASSISTANCE PROGRAM (Formerly known as Food Stamps)**

[www.dcf.state.fl.us/programs/access](http://www.dcf.state.fl.us/programs/access)

**Services:** Food Stamp Program helps low income individuals and families purchase food. The Temporary Cash Assistance (TCA) Program provides short-term cash benefits to families with children under the age of 18, and pregnant women in their last trimester. Must apply online via [www.myflorida.com/accessflorida](http://www.myflorida.com/accessflorida). Can also visit the DCF office and register using their computers.

**Eligibility:** Includes income, size of household, employment status, and special situations (i.e. pregnancy and disability). Eligibility form available online, but is only a screening tool. Even if individual is found to be ineligible, they may still complete an application for official review.



Partner Name	Customers Served	Address	Zip Code	City
<a href="#"><u>Starting Point Behavioral Health (formerly Sutton Place)</u></a>	General Public	463142 SR 200	32097	Yulee
<a href="#"><u>America's Youth, Inc. At Macedonia AME Church</u></a>	General Public	202 S 9th Street P.O. Box 6216	32034	Fernandina Beach
<a href="#"><u>Barnabas Center</u></a>	Current Client Population	1303 Jasmine Street	32034	Fernandina Beach
<a href="#"><u>Council On Aging Of Nassau County Westside Senior Center</u></a>	Current Client Population	37002 Ingram Road	32046	Hilliard
<a href="#"><u>Episcopal Children's Services - Yulee</u></a>	Current Client Population	96042 Lofton Square	32097	Yulee
<a href="#"><u>Housing Authority Of The City Of Fernandina Beach</u></a>	Current Client Population	1300 Hickory Street	32034	Fernandina Beach
<a href="#"><u>Just For The Love Of Jesus Ministries, Inc.</u></a>	General Public	45101 Blessed Way	32011	Callahan
<a href="#"><u>Life Care Center Of Hilliard</u></a>	Current Client Population	3756 W Third St	32046	Hilliard
<a href="#"><u>New Zion Missionary Baptist Church</u></a>	General Public	10 S 10th St	32034	Fernandina Beach
<a href="#"><u>Northeast Florida Community Action Agency - Nassau County</u></a>	Current Client Population	1303 Jasmine St., Ste. 100	32034	Fernandina Beach
<a href="#"><u>Quality Life Center Of Jacksonville</u></a>	General Public	941510 Old	32034	Fernandina Beach

**Local community partner agencies help the Department of Children and Families provide access to public assistance services. Locations in our area where you may apply for Food Assistance, Cash or Medicaid:**

**GLEANERS DISPATCH**  
[www.gleanersdispatch.org](http://www.gleanersdispatch.org)

**Main Office**  
8207 103<sup>rd</sup> Street  
Jacksonville, Florida 32210-6553

Phone: (904) 777-6344  
Fax: (904) 777-6362  
Info: [gleaners4u@bellsouth.net](mailto:gleaners4u@bellsouth.net)

**Services:** Re-distributes free, fresh food during the week to anyone needing a meal. Main site is the Nassau County 4H Building in Callahan. NOTE: Not a food pantry or food bank. Call main number or check website for distribution days and times.

**GRAY GABLES CHURCH**  
[www.graygables.org](http://www.graygables.org)

54031 Church Road  
Callahan, FL 32011

Phone: 904-879-2986  
Fax: 904-879-1743

**Hours:** Monday-Thursday 8:00am-5:00pm  
Fridays 8:00am-1:00pm

**Services:** CUP Ministry provides emergency non-perishable food.

**Eligibility:** Must be a Nassau County resident.

**JOURNEY CHURCH**  
[www.authenticimpact.com](http://www.authenticimpact.com)

Phone: (904)261-8310

96064 Victoria's Place (Across highway from Chick Filet)  
Yulee, FL 32097

**Hours:** Tuesdays, Thursdays, and every third Saturday. Outreach times between 11-12pm.  
Doors open at 10:00am for fellowship.

**Services:** Boxes of foods available (i.e. meats, dried goods, and produce) for families in need.  
For more information, please contact the Journey Church at (904) 261-8310.

**SALVATION ARMY HOPE HOUSE**

410 S 9th Street  
Fernandina Beach, FL 32034-3623

Phone: (904) 321-0435  
Fax: (904) 277-8019

**Office Hours:** Monday-Friday 10:00am-5:00pm (closed 12:00-1:00)

**Food Pantry Hours:** Mondays, Wednesdays, and Fridays 10:00am-4:00pm (closed 12:00-1:00)

**Services:** Food pantry provides emergency food to anyone in need. Interfaith Dinner Network (IDN) cooks and serves dinner to anyone needing a meal 4 nights a week (call for specific times).

## **SECOND HARVEST FOOD BANK OF NORTH FLORIDA**

[www.wenourishhope.org](http://www.wenourishhope.org)

1502 Jessie Street  
Jacksonville FL 32206

Phone: (904) 353-3663  
Fax: (904) 358-4281  
Info: [thale@lssjax.org](mailto:thale@lssjax.org)

**Services:** Works with local organizations to provide food to community members through various programs. *Kids Café* and the *BackPack Program* provide food for children by working with local youth agencies and schools. The *Mobile Pantry* provides food to needed neighborhoods at a pre-determined distribution point.

## **WIC-WOMEN, INFANTS, AND CHILDREN**

[www.nassaucountyhealth.org](http://www.nassaucountyhealth.org)

**Services:** Nutrition program for women who are pregnant or breastfeeding and their children birth to age 5. The following is provided: healthy foods, nutrition education and counseling, breastfeeding education and classes, and referrals for health care, immunizations, and community services.

**Eligibility:** Child must be age 5 or less, and family must be income eligible based on WIC Income Guidelines. Family does not have to be on public assistance to qualify for WIC.

**Callahan Clinic**  
45377 Mickler Street  
PO Box 551  
Callahan, FL 32011

Phone: (904) 320-6010  
Fax: (904) 428-5636

**Hours:** Tuesday & Thursday 8:00am-4:00pm (closed daily from 12:00-1:00)

**Hilliard Clinic**  
37203 Pecan Street  
PO Box 595  
Hilliard, FL 32046

Phone: (904) 320-6020  
Fax: (904) 428-5636

**Hours:** Wednesday 8:00am-4:00pm (closed daily from 12:00-1:00)

**Yulee Clinic**  
86014 Page's Dairy Road  
PO Box 1493 (32041-1493)  
Yulee, FL 32097

Phone: (904) 875-6111  
Fax: (904) 428-5636

**Hours:** Monday - Thursdays 8:00am-4:00pm (closed daily from 12:00-1:00) Please call to schedule an appointment. The WIC main line is (904) 875-6111 (dial 2 for WIC) and then listen for prompts to get to each site.

### **NASSAU COUNTY FOOD SUPPORT LIST**

“See Appendix 1 -Nassau County Food Support Resource List” for additional information.

## **GENERAL HEALTH**

### **AMERICAN CANCER SOCIETY-NASSAU UNIT**

[www.cancer.org](http://www.cancer.org)

1430 Prudential Drive  
Jacksonville, FL 32207

Phone: (904) 391-3644  
Toll free: 1-800-227-2345  
Fax: (904) 270-0976

**Hours:** Monday-Friday 9:00am-5:00pm

**Services:** Offers cancer patients and survivors an array of products ranging from wigs, scarves, and turbans, to prosthetic products, free of charge. Additionally, the organization offers transportation to and from appointments, and access to information, support groups and programs to help cancer patients and their caregivers navigate the cancer journey.

### **CW VISION INC**

2920 Bailey Rd  
Fernandina Beach, FL 32034

Phone: (904) 572-4420

**Hours:** 9am-12pm on Thursdays by appointment only!

**Services:** Free vision checks for those who qualify.

**Eligibility:** Must qualify within federal guidelines for income. Vouchers may be available through following places; Staring Point Behavioral Health (previously Sutton Place), Samaritan Clinic, Heiken Program, Hope House, Salvation Army, Barnabas and local churches (Church of Christ). Or you may apply by filing out an eligibility packet from CW Vision.

### **EARLY STEPS**

[Marcy.Hajdukiewicz@flhealth.gov](mailto:Marcy.Hajdukiewicz@flhealth.gov)

910 North Jefferson Street  
Jacksonville, Florida 32209

Phone (904) 360-7022  
Fax: (904) 798-4545 or  
(904) 798-4544

Serving Baker, Bradford, Clay, Duval, Nassau, and St. Johns Counties, the Early Steps program provides early intervention services to infants and toddlers from birth to 36 months with

developmental disabilities or delays. Early Steps helps families build on their child's individual strengths by providing services and supports to meet the child's unique needs.

### **ENVIRONMENTAL SERVICES**

<http://nassau.floridahealth.gov/>

96135 Nassau Place Suite B  
Yulee, FL 32097

Phone: (904) 557-9150

Fax: (904) 428-5631

**Hours:** Monday-Friday 8:00am-5:00pm (closed daily 12:00-1:00)

**Services:** Inspection of private wells and septic systems, beaches, limited food inspections (ex: lounges, bars), group home/care inspections, mobile homes and parks, fuel storage tanks, commercial swimming pools, biomedical facilities, and tanning salons.

### **FLORIDA COMMUNITY PREVENTION CENTER (Formerly Healing Balm of Northeast Florida)**

<http://www.floridacommunityprevention.com/>

Main Office in Yulee:

96098 Victoria's Place  
Yulee, FL 32097

Phone: (904) 321-4097

Toll free: 1-866-366-8990

(Located across from Chick Filet and Yulee Walmart on State Rd 200)

Fax: (904) 321-5668

Jacksonville Office (Operation New Hope)

40 East State Street, Suite B  
Jacksonville, FL 32202

Phone: (904) 353-2508

Fax: (904) 353-2588

(Located on corner of Ocean and State Street)

**Hours:** Monday-Friday 8:00am-5:00pm

By appointment only on Saturday and Sunday.

**Services:** Provides substance abuse education and awareness, community development capacity building, sexual assault counseling, community health forums including anger management, health training and seminars, youth counseling. NOTE: Most services open and free to public.

Also, offers physicals and access to other medical and health services. Free confidential HIV/AIDS testing site is open to all. By appointment on Saturday and Sunday.

**Eligibility:** Accepts Medicaid and accepts others based upon sliding scale fee.

### **FLORIDA BREAST AND CERVICAL CANCER EARLY DETECTION PROGRAM**

Florida Department of Health in Duval County  
900 University Boulevard North, Suite 710, MC -67  
Jacksonville, FL 32211

Phone: (904) 253-1610

Fax: (904) 253-2527

**About:** The Florida Breast and Cervical Cancer Early Detection Program address women's health needs and issues locally. The program offers free PAP and mammogram screening to uninsured, low-income women ages 50-64. The program raises awareness about breast and cervical cancer and provides education about the importance of screening including information about human papilloma virus (HPV) vaccination in the high burden communities.

## FLORIDA QUITLINE

[floridaquitline.com](http://floridaquitline.com)

*Toll free: 1-877-U-CAN-NOW  
(1-877-822-6669)*

**Services:** Trained cessation counselors provide 24/7 smoking cessation counseling over the phone. Call to schedule an appointment. Counselor will help plan a personal cessation plan, and are available to offer tips and support whenever is needed.

## GERRI'S CORNER AT BARNABAS

[www.BarnabasNassau.org/gerris-corner](http://www.BarnabasNassau.org/gerris-corner)

1303 Jasmine Street  
Fernandina Beach, FL 32034

Phone: (904) 261-7000  
Info: [gerriscorner@barnabasnassau.org](mailto:gerriscorner@barnabasnassau.org)

**Hours** Tuesday 10am-1pm  
Thursday 1-4p  
Call to make an appointment.

**Services:** Provides information and products for women affected by all types of cancer. Visits are confidential and one-on-one. Individuals can receive products from head wraps to prosthesis free of charge. Family and friends are welcome and can receive information regarding support groups, reference materials, DVD's, etc.

## GENERAL HEALTH (INCLUDES HIV TESTING SITES)

### FLORIDA COMMUNITY PREVENTION CENTER (Formerly Healing Balm of Northeast Florida)

<http://www.floridacommunityprevention.com/>

Main Office in Yulee:  
96098 Victoria's Place  
Yulee, FL 32097

(Located across from Chick Filet and Yulee Walmart on State Rd 200)

Phone: (904) 321-4097  
Toll Free: 1-866-366-8990  
Fax: (904) 321-5668

Jacksonville Office (Operation New Hope)  
40 East State Street, Suite B  
Jacksonville, FL 32202  
(Located on corner of Ocean and State Street)

Phone: (904) 353-2508  
Fax: (904) 353-2588

**Hours:** Monday-Friday 8:00am-5:00pm

**Services:** Free HIV testing during business hours. By appointments only on Saturday and Sunday.

## FLORIDA DEPARTMENT OF HEALTH – NASSAU COUNTY

<http://nassau.floridahealth.gov/>

**Services:** HIV and STD services available. No charge for treatment of STD contacts; there is a screening charge based on a sliding fee scale but no one is denied services based on inability to pay. HIV testing and counseling-a charge for anonymous test and sliding fee scale for confidential test. Will not deny service based on inability to pay. Limited case management available, however, individuals referred to Jacksonville clinics for care.

**Callahan Clinic**  
45377 Mickler Street  
PO Box 551  
Callahan, FL 32011

Phone: (904) 320-6010  
Fax: (904) 428-5633

**Hours:** Mondays-Thursdays 8:00am-5:00pm (closed daily 12:00-1:00pm)

**Fernandina Beach Clinic**  
1620 Nectarine Street  
Fernandina Beach, FL 32034

Phone: (904) 557-9130  
Fax: (904) 428-5632

**Hours:** Friday 8:00am-5:00pm (closed daily 12:00-1:00pm)

**Yulee Clinic**  
86014 Page's Dairy Road  
PO Box 1493 (32041-1493)  
Yulee, FL 32097

Phone: (904) 875-6110  
Fax: (904) 428-5634

**Hours:** Monday-Friday 8:00am-5:00pm (closed daily 12:00-1:00pm)

### **Vital Statistics: Walk-ins clients**

Florida Department of Health, Nassau  
Office of Vital Statistics  
1620 Nectarine Street  
Fernandina Beach, FL 32034

Phone: (904) 557-9146  
Fax: (904) 428-5632

### **LIFE SOLUTIONS**

**Women's Resource Centers of Jacksonville and Nassau is now – LIFE Solutions**

[www.LifeSolutionsFL.com](http://www.LifeSolutionsFL.com)



Locations:

12456 Sago Avenue West *Phone:* (904) 696-9100  
**Jacksonville** FL 32218 *Fax:* (904) 696-9104

850966 US Highway 17 North *Phone:* (904) 696-9100

**Yulee FL 32097 (call for hours)**

**Hours: Monday thru Friday – 10:00—5:00, Walk-ins welcome**

Life Solutions is a ministry focused on providing compassionate, life-affirming services and support to women and men facing unexpected pregnancies. Our centers provide a safe, friendly, and non-judgmental environment where clients can discuss their fears and concerns and receive vital information regarding their health, pregnancy, and options. Pregnancy options counseling is provided to help the client make an informed decision by offering free pregnancy testing, life-affirming ultrasounds and accurate information so that they can make the best decision possible for their bodies, their unborn children and their future.

We also are an educational facility (parenting/life skill classes and material assistance) committed to helping families achieve lasting independence with an integrated approach that begins with meeting immediate needs but reaches much further to help people achieve independence and to alleviate the root causes of poverty. Earn While You Learn Program, Hannah's Hope (adverse diagnosis), and post-abortion healing workshops.

**\*For more information:**

Website—[www.LifeSolutionsFL.com](http://www.LifeSolutionsFL.com)

Email—[LifeSolutions.FL@gmail.com](mailto:LifeSolutions.FL@gmail.com)

Facebook—[www.FollowLifeSolutions.com](http://www.FollowLifeSolutions.com)

**STARTING POINT BEHAVIORAL HEALTH**

**(Previously Sutton Place)**

[www.spbh.org](http://www.spbh.org)

463142 SR 200 West  
Yulee, Fl. 32097

Phone: (904) 225-8280  
Fax: (904) 225-8232

**Hours:** Monday-Friday 8:00am-5:00pm

**Services:** Free HIV testing with appointment.

**WOMEN'S RESOURCE CENTERS OF JACKSONVILLE AND NASSAU**

Women's Resource Centers of Jacksonville and Nassau has changed names to Life Solutions. See Life Solutions heading for more information

**HEALTH INSURANCE**

**AFFORDABLE CARE ACT/ "OBAMA" CARE**

<https://www.healthcare.gov/>

This is the website to enroll for the new obama healthcare coverage.

**FLORIDA KIDCARE**

[www.floridakidcare.org](http://www.floridakidcare.org)

Can apply by phone or online

Toll free: 1-888-540-5437



**Services:** Programs-MediKids (ages 1-4), Healthy Kids (ages 5-18), Children's Medical Services Network (birth to age 18 with special health care needs), and Medicaid (birth to age 18 with other insurance may still qualify). All programs cover doctor visits, check-ups, hospital, surgery, prescriptions, emergencies, vision/hearing, dental, and mental health.

**Eligibility:** Child must be under age 19, be uninsured, meet income requirements, be a US citizen or qualified non-citizen, not be eligible for Medicaid, not be the dependant of a state employee eligible for health insurance, and not be in a public institution.

### **FLORIDA MEDICAID**

[www.dcf.state.fl.us/programs/access](http://www.dcf.state.fl.us/programs/access)

**Services:** Provides medical coverage to low income individuals and families. Must apply online via [www.myflorida.com/accessflorida](http://www.myflorida.com/accessflorida).

**Eligibility:** Based on various factors such as income, family size, special circumstances (pregnancy, disability, etc.), and whether family/individual carries other forms of insurance

### **MEDICARE**

[www.medicare.gov](http://www.medicare.gov)

*Toll free:* 1-800-MEDICARE  
(1-800-633-4227)

**Services:** Health insurance for individuals age 65+, under age 65 with certain disabilities, and any age with End Stage Renal Disease (ESRD). Medicare offers various plans and options.

**Eligibility:** Determined by a series of questions that can be found online or by calling the listed number. NOTE: Social security information is required; however, if you do not have a social security number due to various reasons (lost card, citizenship, etc.), call the Social Security office at 1-800-772-1213 for Medicare enrollment and eligibility.

### **SERVING HEALTH INSURANCE NEEDS OF ELDERS (S.H.I.N.E.)**

[www.floridashine.org](http://www.floridashine.org)

#### **ElderSource**

4160 Woodcock Drive 2nd floor  
Jacksonville, FL 32207

Phone: (904) 391-6600

Toll free: 1-888-242-4464

Fax: (904) 391-6601

Info: [information@myeldersource.org](mailto:information@myeldersource.org)

**Hours:** Monday-Friday 7:30am-6:30pm

**Services:** Florida's insurance assistance program for elderly individuals. Provides insurance counseling and educational materials to elders, caregivers, and family members. Assists individuals in receiving health insurance coverage. ElderSource is the local counseling center for SHINE program. Various locations throughout Duval County, but must contact ElderSource for a listing and to make an appointment at these locations.

## HOSPICE

### COMMUNITY HOSPICE OF NORTHEAST FLORIDA

[www.communityhospice.com](http://www.communityhospice.com)

96084 Victoria's Place  
Yulee, FL 32097

Phone: (904) 225-0411  
Fax: (904) 225-0873

**Hours:** Monday-Friday 8:00am-5:00pm

**Services:** Provides specialized end-of-life care for adults and children, and support services for family members. Services provided at home, long-term care facilities, hospitals, and 4 inpatient facilities (located in Jacksonville). Other services include pain management; provides medication, supplies, and equipment; family support; assistance with personal care needs; emotional and spiritual support; arrange for short-term inpatient care; bereavement counseling. NOTE: Yulee Satellite Office staff provides out-patient care.

### VITAS INNOVATIVE HOSPICE CARE

[www.vitas.com](http://www.vitas.com)

474262 State Rd. 200  
Fernandina Beach, FL 32034

Phone: (904) 491-1759  
Fax: (904) 491-1762

**Hours:** Monday – Friday 8:00 a.m. – 5:00 p.m.

**Services:** VITAS provides care for patients with a wide range of life-limiting illnesses and support for their family. Care is provided in patients' homes, nursing homes, assisted living facilities, and hospitals. VITAS services include pain management consisting of medications, medical supplies, and equipment. We also provide 24/7/365 access to Telecare (on call staff to coordinate needs after hours). VITAS coordinates inpatient and respite care, provides personal care assistance, and emotional and spiritual support for patients and family members which also includes bereavement counseling.

**Eligibility:** *VITAS admits and cares for all hospice-appropriate patients referred to us, regardless of their ability to pay.*

## HOUSING ASSISTANCE

### BARNABAS CENTER

[www.barnabasnassau.org](http://www.barnabasnassau.org)

**Main Office**

1303 Jasmine Street, Suite 101  
Fernandina Beach, FL 32034

Phone: (904) 261-7000  
Toll free: 1-888-885-6498  
Fax: (904) 277-2984

**Hours:** Monday: 1:00pm - 4:00pm (phones open at 10:00am)  
Tuesday -Thursday: 10:00am - 3:00pm  
(Appointments are required)

**Services: Only assists with partial payments for rent.** Provides assistance with Rent/Mortgage (must provide copy of current lease agreement), New Housing (Assistance with first month's rent only, and the rental and electrical deposit must be paid beforehand), Utilities (first referred to other agency for assistance. If help is not available, must provide past due notice from utility company and copy of rental agreement for aid from Barnabas. Deposits and late fees are not paid).

**Eligibility:** Must have an appointment, show proof of Nassau County residency, proof of income and social security cards for all family members, and confirm changes in situation that require assistance.

**Callahan Satellite Office**

45237 Mickler St  
Callahan, FL 32011

Phone: (904) 261-7000

**Hours:** Mondays and Wednesdays: 10:00am-1:00pm

Prefer appointments, but walk-ins accepted. Call FB location to schedule appointments.

**Services:** Assists those with limited transportation by serving as a half-way point for those seeking services from Barnabas. Mainly for speaking with clients and collecting their information to be then transferred to the Main Office in Fernandina Beach. All info is processed at the Main Office.

**CEDAR HAVEN TRANSITIONAL HOME**

900 Cedar Street  
Fernandina Beach, FL 32034

Phone: (904) 699-7477

The Cedar Haven Transitional house seeks to assist women that have been challenged by homelessness in Nassau County with stays of up to 180 days in an effort to assist them towards permanent housing.

**FLORIDA COMMUNITY PREVENTION CENTER  
(Formerly Healing Balm of Northeast Florida)**

<http://www.floridacommunityprevention.com/>

Main Office in Yulee:

96098 Victoria's Place  
Yulee, FL 32097

Phone: (904) 321-4097

Toll free: 1-866-366-8990

(Located across from Chick Filet and Yulee Walmart on State Rd 200) Fax: (904) 321-5668

Jacksonville Office (Operation New Hope)

40 East State Street, Suite B  
Jacksonville, FL 32202

Phone: (904) 353-2508

Fax: (904) 353-2588

(Located on corner of Ocean and State Street)

**Hours:** Monday-Friday 8:00am-5:00pm

By appointment only on Saturday and Sunday.

Services: Call for more information regarding housing assistance.

**HABITAT FOR HUMANITY**  
[nassauhabitatforhumanity.org](http://nassauhabitatforhumanity.org)

516 South 10th Street, Suite 115  
Fernandina Beach, FL 32034

Phone: (904) 277-0600  
Info: [nhfh@net-magic.net](mailto:nhfh@net-magic.net)

**Hours:** Volunteers available Wednesday mornings

**Services:** Provides adequate housing for Nassau County residents who meet specific housing and income guidelines. Applicants need to be able to pay for their home (i.e. down payment, mortgage payments, participate in building house).

**Eligibility:** Individual/family must have lived/worked in Nassau County at least 1 year; currently live in unsafe, overcrowded, inadequate, or subsidized housing; currently live in home costing more than 50% of income; and earn income falling within HFH's guidelines.

**HOUSING AUTHORITY**  
[www.hud.gov](http://www.hud.gov)

1300 Hickory Street  
Fernandina Beach, FL 32034

Phone: (904) 261-5051  
Fax: (904) 261-8547

**Hours:** Monday-Thursday 8:30am-5:00pm (closed 12:00-1:00)

**Services:** Provides 2 programs: Public Housing and Section 8. *Public Housing*-1-4 bedroom units, based on family size; income-based (30% of income goes toward rent). Credit check and background screening required. *Section 8*-House choice voucher allows choice of housing in Nassau County. Same income guidelines; background check required. NOTE: Individual/family does not have to be a Nassau County resident and is open to any family size.

**Eligibility:** Must pass background screening and credit check

**ILRC OF NORTHEAST FLORIDA**  
[www.theilrc.org](http://www.theilrc.org)

2709 Art Museum Drive  
Jacksonville, FL 32207

Phone: (904) 399-8484  
Toll free: 1-888-427-4313

**Hours:** Monday-Friday 8:00am-5:00pm

**Services:** Nursing Home Transition provides services to individuals with disabilities residing in nursing homes or other institutional settings, who express the desire to live in non-institutionalized community based settings.

**JO HELLER TRANSITION HOUSE**  
[www.qualitylifecenter.com](http://www.qualitylifecenter.com)

1238 Nassauville Rd.  
Fernandina Beach, FL 32034

Phone: (904) 206-4120

**Office Hours:** Monday-Friday 8:00am-4:00pm

**Staff hours:** 24/7

**Services:** Provides temporary housing for adults (age 18+) with a diagnosed mental illness as they transition from or to a hospital or other care provider. The length of stay is 3-10 days. Afterwards, another form of housing is found for the individual (i.e. assisted living facility). Individuals engage in structured activities during the week in Hilliard and social activities on weekends. Staff is available 24/7, as well as a case manager on site. Individuals taking medication or with prescriptions are helped, but medication is not provided by the facility. Transportation to the facility is available for those who do not have a way of getting there.

## **NORTHEAST FLORIDA COMMUNITY ACTION AGENCY**

[www.nfcaa.net](http://www.nfcaa.net)

Jasmine Office Center  
1303 Jasmine Street, Suite 100  
Fernandina Beach, Florida 32034

Phone: (904) 261-0801  
Fax: (904) 261-3188  
Info: [contact@nfcaa.org](mailto:contact@nfcaa.org)

**Hours:** Monday-Friday 8:00am-5:00pm

**Services:** Provides home repairs that can reduce utility bills, lower energy consumption, and correct structural issues. Repairs comply with local building code standards. Programs include *Weatherization* (repairs to decrease gas/electric bills), *Community Development Block Grant* (correct issues that can threaten health, safety, and security of homeowner), *State Housing Initiatives Partnership* (assistance to repair homes), and *Home Ownership* (financial education and career development to enhance a person's ability to own a home). Also, provides emergency assistance with utilities.

**Eligibility:** Must be "low-income" as specified by the federal government's Poverty Guidelines. *State Housing Initiatives Partnership*-house must qualify as substandard, low-income, single family home and must be occupied by homeowner.

## **MEDICAL SERVICES**

### **AMELIA URGENT CARE**

96279 Brady Point Rd  
Fernandina Beach, FL 32034-7076

Phone: (904) 321-0088  
Fax: (904) 321-0016

**Hours:** Monday-Friday 8:00am-8:00pm  
Saturdays 9:00am-5:00pm  
Sunday 9:00am-2:00pm

**Services:** Provides urgent care, wellness services, occupational medical services to manage work-related illness and injury, drug screenings, DNA testing, and x-rays. Lab work, screenings, and x-rays are done and read at the facility. Services provided to both insured and uninsured individuals, but this facility does not take Medicaid.

## **BAPTIST MEDICAL CENTER-NASSAU**

[www.e-baptisthealth.com](http://www.e-baptisthealth.com)

1250 South 18th Street  
Fernandina Beach, Florida 32034

Main: (904) 321-3500  
Admin: (904) 321-3507  
Fax: (904) 321-3511

**Services:** Part of the Baptist Health System-provides a variety of inpatient and outpatient services such as diagnostics, breast health, cardiopulmonary/sleep lab, clinical lab, maternity care (children who require inpatient pediatric are referred to Wolfson Children's Hospital), hospitalist program (works with local primary care physicians), surgery, rehabilitation, and inpatient care. Also, provides 24-hour emergency care.

## **BARNABAS CENTER**

[www.barnabasnassau.org](http://www.barnabasnassau.org)

**Barnabas Medical Program**  
1303 Jasmine Street, Suite 101  
Fernandina Beach, FL 32034

Phone: (904) 261-7887

**Hours: Urgent Care Clinic:** Tues and Thurs evenings with doors opening at 4:45pm for urgent care.

**Primary Care Medical Program:** Mondays and Wednesdays 9:00am-4:00pm  
Tuesdays and Fridays 9:00am-12:00pm

**Services:** Provides medical services to adults who need urgent care (but does not require hospital emergency room) such as hypertension, wound care, unstable diabetes, and infection treatment (i.e. ear infections, bronchitis, flu). **Does not assist with controlled substances!**

**Eligibility:** Must be Nassau County resident, complete financial review, must have a mental health screening, and cannot have medical insurance including Medicare and Medicaid.

## **ILRC OF NORTHEAST FLORIDA**

[www.theilrc.org](http://www.theilrc.org)

2709 Art Museum Drive  
Jacksonville, FL 32207

Phone: (904) 399-8484  
Toll free: 1-888-427-4313

**Hours:** Monday-Friday 8:00am-5:00pm

**Services:** BROOKS Temporary Loan Closet (TLC) loans durable medical equipment for 6 months to individuals with permanent or temporary disabilities. Provides electric wheelchairs, shower chairs, canes, walkers, and more, for free.

**Eligibility:** Must have a disability (permanent or temporary) and doctor's prescription.

## **FLORIDA DEPARTMENT OF HEALTH – NASSAU COUNTY**

[www.nassaucountyhealth.org](http://www.nassaucountyhealth.org)

**Administration**

30 South 4th Street  
Fernandina Beach, FL 32034-4272

Phone: (904) 557-9180  
Fax: (904) 428-5632

**Hours:** Monday-Friday 8:00am-5:00pm

**Services:** *Vital Statistics, Healthy Start, Disease Intervention and Control, and Injury Prevention.* *Vital Statistics* provides birth and death certificates. *Healthy Start*-educational and supportive program that serves pregnant women and families with children under 3. Services include parenting education, childbirth classes, breastfeeding support, psychosocial counseling (individual, couple and family), smoking cessation, inter-conceptional (women's health) services, developmental screenings and case management. Services can be provided in home, at any Health Department site, or any location in Nassau County. Ongoing group services include childbirth classes, a breastfeeding support group, and a parenting group. Other groups are formed as needed (e.g., grief and loss, teen parents). *Injury Prevention Program*-provides car seat education and guidance with installation from certified car seat technicians. Car seats are available at a reduced cost for expectant mothers and children on Medicaid. Bike helmets for youth are also available.

**Eligibility:** Healthy Start clients must reside in Nassau County. They also must be pregnant, have a child under 3, or have been pregnant within the last 2 years.

**Callahan Clinic**

45377 Mickler Street  
Callahan, FL 32011

Phone: (904) 320-6010  
Fax: (904) 428-5633

**Hours:** Monday-Thursday 8:00am-5:00pm (closed daily 12:00-1:00pm)

**Services:** Offers *primary care* for adults, *immunizations* for adults and children, *family planning*, and *St. Vincent's Mobile Unit*. *Immunizations-VFC* (Vaccines for Children) Program available to children from birth to age 18. Adults can receive Hepatitis B, tetanus, and flu vaccines. *Family Planning*-Pregnancy testing available and help with completing Pregnancy Medicaid application as well as Extended Family Planning Medicaid application if eligible. *St. Vincent's Mobile Unit* provides medical care 1 day a month but in a separate facility.

**Eligibility:** *Primary Care*-adults must enroll and meet financial and medical criteria at the health department. *VFC*-child must be uninsured, on Medicaid, or have insurance that does not cover immunizations. *Family Planning Services* are provided to those seeking a method of contraception (birth control).

**Fernandina Beach Clinic**

1620 Nectarine Street  
Fernandina Beach, FL 32034

Phone: (904) 557-9130  
Fax: (904) 428-5632

**Hours:** Tuesday 1 – 4 pm walk in clinic  
2<sup>nd</sup> and 4<sup>th</sup> Friday 8:00am-4:00pm (closed 12:00-1:00pm)

**Services:** Birth control, STD screenings and family planning services.

**Yulee Clinic**

86014 Page's Dairy Road  
Yulee, FL 32097

Phone: (904) 875-6110  
Fax: (904) 428-5634

**Hours:** Monday-Friday 8:00-5:00pm (closed daily 12:00-1:00pm)

**Services:** Offers *primary care* for adults, *immunizations* for adults and children, and *family planning*. *Immunizations-VFC* (Vaccines for Children) Program available to children from birth to age 18. Adults can receive Hepatitis B, tetanus, and flu vaccines. *Family Planning*-Pregnancy testing available and help with completing Pregnancy Medicaid application as well as Extended Family Planning Medicaid application if eligible.

**Eligibility:** *Primary Care*-adults must enroll and meet financial and medical criteria at the health department. *VFC*-child must be uninsured, on Medicaid, or have insurance that does not cover immunizations. *Family Planning Services* are provided to those seeking a method of contraception (birth control).

**FLORIDA COMMUNITY PREVENTION CENTER**  
**(Formerly Healing Balm of Northeast Florida)**  
<http://www.floridacommunityprevention.com/>

Main Office in Yulee:  
96098 Victoria's Place  
Yulee, FL 32097

Phone: (904) 321-4097  
Toll free: 1-866-366-8990

(Located across from Chick Filet and Yulee Walmart on State Rd 200) Fax: (904) 321-5668

Jacksonville Office (Operation New Hope)  
40 East State Street, Suite B  
Jacksonville, FL 32202  
(Located on corner of Ocean and State Street)

Phone: (904) 353-2508  
Fax: (904) 353-2588

**Hours:** Monday-Friday 8:00am-5:00pm  
By appointment only on Saturday and Sunday.

**Services:** Provides substance abuse education and awareness, community development capacity building, sexual assault counseling, community health forums, health training and seminars, youth counseling. Also, physicals access to other medical and health services. Free confidential HIV/AIDS testing site is open to all. By appointment on Saturday and Sunday.

**Eligibility:** Accepts Medicaid and accepts others based upon sliding scale fee. NOTE: Most services open and free to public.

**MCPHERSON COUNSELING SERVICES**  
[www.mcphersoncounseling.com](http://www.mcphersoncounseling.com)

850310 US Hwy 17  
Yulee, FL 32097

Phone: (904) 548-0160  
Fax: (904) 548-0158  
Info: [theram@mcphersoncounseling.com](mailto:theram@mcphersoncounseling.com)

**Hours:** Monday and Thursday: 10:00am-6:00pm, Tuesday, Wednesday, and Friday 9:00am-4:00pm

**Services:** Veteran owned and operated non-profit Outpatient Treatment facility offering Outpatient Treatment, Individual & Family Therapy, Drug Testing Services, Anger Management, Parenting Classes, Notary Public, and SAP Services.



**STARTING POINT BEHAVIORAL HEALTH**  
**(Formerly Sutton Place)**  
[www.spbh.org](http://www.spbh.org)

463142 SR 200 West  
Yulee, FL 32097

Phone: (904) 225-8280  
Fax: (904) 225-8232

**Hours:** Monday-Friday 8:00am-5:00pm

**Services:** Private non-profit facility. Provides psychiatric treatment, mental health counseling, and substance abuse services for residents of Nassau County. Provides 24-hour emergency assistance by calling the main number. Not all insurance taken (complete list online). Participant required to complete intake form along with financial form with Intake Specialist prior to appointment.

**PHYSICAL ACTIVITY OPPORTUNITIES (FREE)**

**AMELIA ISLAND RUNNERS**  
[www.ameliarunners.com](http://www.ameliarunners.com)



**Who:** All ages, all abilities, always welcome -- and it's always free, with free expert coaching advice available. Walkers welcome too!

**What:** Group runs and walking groups

**When:** Wednesdays from 6 to 7 p.m. at FBHS track, 435 Citrona Drive (Fernandina Beach)

**DOME HEALING CENTER- FREE YOGA AND MEDITATION CLASSES**

<http://dome.domehealingcenter.com/>

5024 First Coast Highway  
Fernandina Beach, FL  
(904) 277-3663

**Who:** All classes open to anyone of any level of student.

**What:** Free Yoga and Meditation classes. Come learn relaxation, flexibility, and deep breathing techniques. Beginners to Advanced Levels of Amrit, Sivanana, Hatha, Raja, and Meditative Yoga classes. *All Yoga and Mediations classes have been offered free of charge since December 2012. We intend to offer their classes free for as long as we are able.*

## WALKIN' NASSAU WALKING CLUB



**Who:** For anyone interested in improving their health while meeting new Walkin' Nassau friends.

**What:** Walkin' Nassau is a walking club dedicated to bringing walking to everyone! The group was founded by long-time local resident, Ned Tyson, in 2009. Today the club has sanctioned Year Round Events and holds monthly walks. Walkin' Nassau is affiliated with the American Volkssport Association (AVA). The AVA is a national organization with clubs throughout the United States.

**Where:** Join one of their walk events (Fort clinch, beaches, and other places in Nassau County)

## MCCI MEDICAL GROUP

449621 US Highway 301, Ste 110  
Callahan, FL 32011  
Tel: (904) 507-2692  
Fax: (904)-507-2693 or (904) 507-2694

The MCCI Callahan Medical Center often offers free healthy lifestyle presentations to the community, as well as exercise activities such as group walking, Zumba Gold or Silver Sneakers. Check the monthly calendar for up-to-date classes and events.

<http://www.mccigroup.com/locations/location.php?lid=102>

## WALK WITH ME PROGRAM

**Who:** Anyone interested in walking!

**What:** Walk With Me Program is a free, community-wide (Nassau) walking program that encourages works sites, agencies, and other community members to start walking groups. While supplies last, the first five participants who sign up from your organization or community group will receive free incentive items (rally towels, water bottles) with the Walk With Me logo. You can also earn bright green, Walk With Me logo shoe laces by walking documenting your first 50 miles on your Walk With Me log. Call the Health Department in Nassau County's Health Education Program for more information: (904) 530-6761 or (904) 530-6797.

**When:** Call to find out about existing walking groups or start your own.



Visit Walk With Me Nassau on facebook!

## SUPPORT GROUPS

### **AL-ANON ALATEEN**

**Services:** Provides support for relatives, friends, and family members of alcoholics.  
[www.jaxafg.org](http://www.jaxafg.org)

For meeting locations: (904) 350-0600

### **ALCOHOLICS ANONYMOUS**

**Services:** Provides alcoholism-related resources and rehab center listings

#### **Amelia Room**

[ameliaroom.com](http://ameliaroom.com)

906 South 7th Street

Phone: (904) 261-8349

Fernandina Beach, FL 32034-4022

**Services:** Provides alcoholism-related resources and rehab center listings.

### **Alachua Club**

32 N 3rd St  
Fernandina Beach, FL 32034

Phone: (904) 261-3580

### **Council on Aging**

1367 South 18<sup>th</sup> Street  
Fernandina Beach, FL 32034

**Services:** Support group for those affected by Alzheimer's and dementia. Meets the 3<sup>rd</sup> Tuesday of each month. Call (904) 261-0701 for more information.

### **CANCER SUPPORT GROUPS**

#### **Bosom Buddies**

**Fernandina Beach Police Dept.**

1525 Lime St  
Fernandina Beach, Florida 32034

**Services:** Support group for those affected by breast cancer. Meets the 1<sup>st</sup> Wednesday of each month. Call (904) 225-0067 for more information.

#### **Man to Man**

**Baptist Medical Center- Nassau**

2050 S 18th St  
Fernandina Beach, Florida 32034

**Services:** Support group for those affected by prostate cancer. Call 1-800-227-9954 for more information.

**EMPOWERED PARENT**  
[www.ihelpparents.com](http://www.ihelpparents.com)

**NARCOTICS ANONYMOUS**

**Services:** Provides support for those whom drugs have become a problem  
[firstcoastna.org](http://firstcoastna.org)

Helpline and meeting locations: (904) 723-LOVE

*Contact info:* [firstcoastna.org/contact.htm](http://firstcoastna.org/contact.htm)

*Meeting info:* [firstcoastna.org/meetings.htm](http://firstcoastna.org/meetings.htm)

**NATIONAL ALLIANCE FOR THE MENTALLY ILL (NAMI NASSAU COUNTY)**

[nassau.nami.org](http://nassau.nami.org)

PO Box 15816  
Fernandina Beach, FL 32035

Phone: (904) 277-1886  
Info: [mohnalisa8@aol.com](mailto:mohnalisa8@aol.com)

**Services:** Support group for those affected by mental illness. Meetings are held monthly at various locations. Check website, call, or email for locations, times, and general information.  
**NOTE:** No regular office hours.

**TRANSPORTATION SERVICES**

**ADULT BIKES FOR BARNABAS (ABB)**

(904) 261-7000

**Bikes for Barnabas!**



**Services:** Adult Bikes for Barnabas (ABB) provides repaired/refurbished used bikes with safety equipment such as good tires and lights.

**Eligibility:** Barnabas clients who show they have a job or are actively looking for a job are eligible for a free bike. Call (904) 261-7000 for more information.

**NASSAU EXPRESS TRANSIT or "NET"**

<http://coanassau.com/>

This new service, named "Nassau Express Transit" or "NET", is open to the public, does not require pre-registration/qualification, only picks up from central designated collection points, and is limited to seats available (10-14) for each bus. The fare is \$1 each way for passengers, with weekly/monthly bus passes envisioned after the trial period.

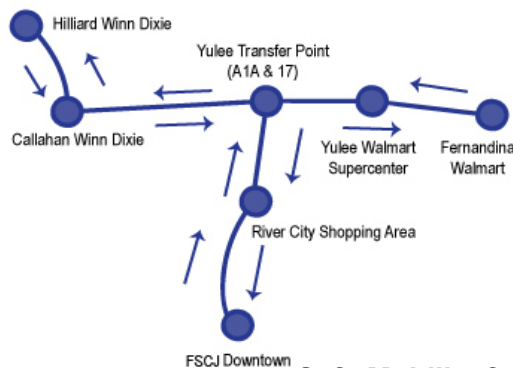
The "NET" buses travel a pre-determined route and schedule each weekday from several designated collection points or "NET Bus Stops". These NET buses start very early in the morning, Monday through Friday. One bus begins its route in Fernandina Beach with an intermediate pick-up point in Yulee, and one bus begins in Hilliard with an intermediate pick-up point in Callahan. Both NET buses stop at River City Market Place, and then ride on to the JTA

Main transfer point in downtown Jacksonville—where connections can be made with Jacksonville's bus and rail systems. The NET buses will also take riders back to Nassau County, returning to Fernandina and Hilliard, at designated times. Planned initial NET service will be an early morning (6 a.m.) trip to Jacksonville, one mid-day trip (11a.m.-Noon), and finally a late afternoon bus will travel from both Hilliard and Fernandina to Jacksonville, leaving Jacksonville at 6:00 p.m. to return to Nassau County. This NET service will be operated and controlled by COA Transportation, Council on Aging. **For more information, contact Greg Frick, Transportation Manager 261-0701 x 114 or [nassautransit@gmail.com](mailto:nassautransit@gmail.com)**

#### Transportation Office (Eastside Senior Center)

Phone: (904) 261-0700

Fax: (904) 261-3940



**Services:** *Medicaid Non-Emergency Transportation* assists Medicaid recipients with getting to their medical appointments. Also provides transportation to those who may be unable to transport themselves because of various reasons (i.e. physical or mental disability, income status, or age).

#### Safe Mobility for Life (SMFL) Program

<https://findarideflorida.org>

Services: FindaRideFlorida.org is an online listing of transportation service providers in all of Florida's 67 counties. Service is available to anyone and providers are selected based on where you are travelling from and to, the purpose of the trip (e.g. education, work, medical, other), and do you have additional needs (e.g. escort to and from vehicle or accommodation for wheelchair)

## VETERAN'S ASSISTANCE

### BARNABAS – SUPPORTIVE SERVICES FOR VETERAN'S FAMILIES

Phone: (904) 261-7000

### DISABLED AMERICAN VETERANS (CHAPTER # 38)

**The Peck Center**  
**516 South 10<sup>th</sup> St**  
 Fernandina Beach, FL 32034

Phone: (904) 556-3363

**Hours:** Tuesdays 9:00am-2:00pm

**Services:** Disabled American Veterans Service Officer, Jennett Wilson Baker, will be on duty at the Peck Center, every Tuesday from 9:00am-2:00pm, to provide free, professional assistance to veterans and their families in obtaining benefits and services earned through military service. You can make an appointment by calling (904) 556-3363 or just come to the Peck Center Reception Room.

**Eligibility:** Free service for veterans and family members

## NASSAU COUNTY VETERAN'S SERVICES

**Nassau County Courthouse**  
76347 Veterans Way  
Yulee, FL 32097-5404

Phone: (904) 548-4670  
Fax: (904) 548-4539

**Hours:** Monday-Thursday 8:30am-4:00pm  
Fridays 8:30am-12:30pm

**Services:** Can apply for and obtain VA benefits. Resources available to assist individuals with other services.

**Eligibility:** Vary depending on program individual is applying for. Call for more information.

## WEB BASED PRESCRIPTION ASSISTANCE PROGRAMS

**Services:** These websites offer individuals with the opportunity to obtain their medication at low or no cost. After searching for the medication by name or company, a list of sources, eligibility requirements, and ordering information is displayed.

**Eligibility:** Requirements differ by organization.

[www.rxassist.org](http://www.rxassist.org) [www.pparx.org](http://www.pparx.org) [www.needymeds.org](http://www.needymeds.org) [www.medicare.gov/pap](http://www.medicare.gov/pap)

## YOUTH PROGRAMS

### BIG BROTHERS BIG SISTERS

[www.bbbsnefl.org](http://www.bbbsnefl.org)

516 South 10th Street Suite 103  
Fernandina Beach, FL 32034-3511

Phone: (904) 261-9500  
Fax: (904) 261-9583  
Info: [efoster@bbbsnefl.org](mailto:efoster@bbbsnefl.org)

**Services:** Child is paired with a community volunteer who serves as a mentor and engages in activities, such as sports, team activities, and assistance with school work. Programs: *Community One-to-One*-child and volunteer (Big and Little) meet during month for various activities. *Bigs in Schools*-site-based mentoring program that works to improve academic, social, and behavioral performance through one-to-one interactions at the child's school one hour a week during the year.

### BOYS AND GIRLS CLUB OF NASSAU COUNTY

[bgcnassau.org](http://bgcnassau.org)

**Services:** Offers after school program and field trips. After-school program covers 5 core areas: arts, health, life skills, education, and leadership. Children given time to complete homework, or read, and earn points toward incentives.

**Eligibility:** Child must be between ages 6-18. All participants must complete orientation.

**Miller Freedom Center**  
942259 Old Nassauville Rd  
Fernandina Beach, FL 32034-7115

Phone: (904) 261-1075  
Fax: (904) 261-8168  
Info: [info@bgcnassau.org](mailto:info@bgcnassau.org)

**Hours:** Monday-Friday 2:30pm-7:00pm

**Fernandina Beach Club**  
907 11th Street at Indigo  
Fernandina Beach, FL, 32034

Phone: (904) 491-9102  
Fax: (904) 491-9103  
Info: [info@bgcnassau.org](mailto:info@bgcnassau.org)

**Hours:** Monday-Friday 1:30pm-7:00pm

**CAMP CONSEQUENCE**  
[www.ihelpparents.com](http://www.ihelpparents.com)



4203 Southpoint Boulevard  
Jacksonville, FL 32216

Phone: (904) 296-1055  
Fax: (904) 448-7700

**Services:** Community mental health, outpatient therapy, residential treatment, delinquency intervention, independent living, foster care, and adoption services.

**Eligibility:** For our mental health programs (community mental health and residential treatment) we accept males and females ages 5-17 years old with the following insurances: Medicaid, Sunshine State Health Plan, First Coast Advantage, Magellan Behavioral Health, CMS/Ped-I-Care Title 19 and Title 21. We do not accept any form of private insurance.

**Office Hours:** Monday-Friday from 8:00am-5:00PM. No walk-ins. All clients must call to set up an appointment.

**EMPOWERED PARENT**  
[www.ihelpparents.com](http://www.ihelpparents.com)

**HEAD START**  
[ecs4kids.org/head\\_start.html](http://ecs4kids.org/head_start.html)

**Services:** Comprehensive pre-school and after-school programs for children ages 3-5 and families who are income eligible with the goal of children being ready for school. NOTE: Includes children with disabilities and special needs. Programs/services include medical, dental, mental health, nutrition, and parental involvement. Parents are encouraged to be involved in

activities. Children receive developmental screenings, and vision and hearing exams with referral and follow-up. Dental exams provided as needed.

**Eligibility:** Based on various requirements (i.e. age, income, etc.). Call for more information. To enroll, call (904) 491-3631.

**Callahan Head Start**  
45089 Third Avenue  
Callahan, FL 32011

Phone: (904) 879-5019  
Fax: (904) 879-5177

**Hours:** Monday-Friday 7:30am-5:00pm

**Peck Head Start**  
516 South 10th Street Suite 100  
Fernandina Beach, FL 32034

Phone: (904) 491-3630  
Fax: (904) 491-3632

**Hours:** Monday-Friday 8:00am-5:00pm

### **NASSAU COUNTY PARKS AND RECREATION**

[www.nassaucountyfl.com/index.aspx?nid=267](http://www.nassaucountyfl.com/index.aspx?nid=267)

45195 Musselwhite Rd  
Callahan, FL 32011

Phone: (904) 548-4689  
Phone: (904) 879-3751  
Fax: (904) 548-4687

**Hours:** Monday-Friday 8:00am-5:00pm

**Services:** Responsible for maintaining, repairing, and supervising Nassau County parks boat ramps, and sports complexes. A complete list available on website-most free and open to public. Also, holds county-wide activity programs such as Little League, Pop Warner Football, Youth Soccer, and Tennis. Contact P&R for information, and to register.

### **NORTHEAST FLORIDA COMMUNITY ACTION AGENCY**

[www.nfcaa.net](http://www.nfcaa.net)

Jasmine Office Center

Phone: (904) 261-0801

1303 Jasmine St, Suite 100  
Fernandina Beach, Florida 32034

Fax: (904) 261-3188  
Info: [contact@nfcaa.org](mailto:contact@nfcaa.org)

**Hours:** Monday-Friday 8:00am-5:00pm

**Services:** *Youth in Action*-After school activities, summer programs, homework assistance, and positive crime prevention education. *Data Busters*-Teaches 14-18 year olds computer and work skills, and partners with local businesses to offer the youth a paying summer job along with transportation to and from work.

**Eligibility:** Must be "low-income" as specified by the federal government's Poverty Guidelines. *Youth in Action*-Youth must be age 8-18. *Data Busters*-Youth must be 14-18 years old.

### **SALVATION ARMY HOPE HOUSE**

410 S 9th Street  
Fernandina Beach, FL 32034-3623

Phone: (904) 321-0435  
Fax: (904) 277-8019



**Office Hours:** 9:30am-6:00pm (closed 12:00-1:00)

**Services:** Offers services for youth, including *Camp Keystone*, a week-long summer camp for children from low-income families, and *Stuff the Bus*, which provides school supplies and backpacks for children prior to the start of the school year

**SAFE KIDS**  
(904) 202-4203

**SEXUAL ASSAULT (RAPE)**  
1(888) 956-7273

**SUICIDE LIFELINE (24 HOURS)**  
1(800) 273-TALK

**TAKE STALK IN CHILDREN**  
[www.takestocknassau.org](http://www.takestocknassau.org)

76346 William Burgess Blvd  
Yulee, Florida 32097

Phone: (904) 548-4464  
Fax: (904) 225-8868

Mentoring (weekly support and guidance from a caring mentor)  
College readiness programs (ongoing support from college success coaches)  
Free college scholarship (a four-year scholarship after completing the program)

**YMCA**  
[www.firstcoastymca.org](http://www.firstcoastymca.org)

**Services:** Offers *PrYme Time*, a county-wide before- and after- school program during the school year available in all elementary schools, youth sports, summer camp, and summer pool programs. *Youth Fit for Life*: After-school fitness program for youth (part of PrYme Time). May register for programs online or in person.

**McArthur Family YMCA**  
1915 Citrona Dr.  
Fernandina Beach, FL 32034

Phone: (904) 261-1080  
Info: [akienle@FirstCoastYMCA.org](mailto:akienle@FirstCoastYMCA.org)

**Hours:** Monday-Thursday 5:30am-9:00pm  
Fridays 5:30am-8:00pm

Saturdays 8:00am-5:00pm  
Sundays 1:00pm-5:00pm

## Appendix 1

### Nassau County Food Support Resource List

#### Fernandina Beach

M -1-4pm T,W,Th-10-3 F-10-Noon	<b>Barnabas Center-</b> 11 South 11th Street	261-7000
M, T, Th, F 5-7pm	<b>Hope House IDN Dinners-</b> Corner of Date & 9th St. (excludes holidays)	321-0435
M, W, F 1:30pm-3:30pm	<b>Hope House Food Distribution (&amp; Clothes)</b> Corner of Date and 9th Streets	321-0435
M.- 4-6pm, T.9-noon 3rd Saturdays- USDA at noon	<b>F.B. Church of Christ-</b> 1005 South 14th St.	277-2517

#### Yulee

T & Th, 11am-noon	<b>The Journey Church Food Ministry-</b> across St. Road 200/A1A from Chick-fil-A	261-8310
M, T, & Th- 5-7pm and 2nd & 3rd Fridays	<b>Yulee Interfaith Dinner Network/Yulee IDN/ Gracie's Kitchen    info@chnassau.com</b>	
Wed.. 10am - noon (Bring ID.)	<b>Yulee United Methodist Church</b> food pantry Food Distributions beginning at 11am, 3rd Wednesdays 86003 Christian Way (Food Pantry allowed every other week.)	225-5381
Mon., 1-4pm	<b>Yulee Baptist Church</b> food pantry 85971 Harts Road, across from Yulee Post Office on A1A	225-5128
2nd Saturdays-9:30-12 (Bring ID.)	<b>Celebration Baptist Church-</b> 85520 Miner Road	225-0777
W & F, noon - 3pm (While supplies last.)	<b>O'Neal Memorial Baptist Church</b> 474257 SR200 (A1A) East, corner by Lowe's-once weekly	277-2606
4th Thursdays, 5pm - 6:30pm	<b>Springhill Baptist Church</b> 941017 Old Nassauville Road	261-4741 ext.111

#### Hilliard

Fridays- 10am - 11am (Bring ID)	<b>First Avenue Baptist Church</b> 27388 West First Avenue    32046	845-2047
Call 1 day ahead.	<b>Hilliard First Assembly of God</b> 550920 US Hwy 1    32046	845-2642

**Callahan**

Mon.- 9:30-2:30		<b>Gray Gables Church</b> -corner of US1 & Church Rd.	879-2986
M through F- 8:30-4:30		<b>First Baptist Church of Callahan</b> -2-day supply	879-2172
Wednesdays @ 5pm		<b>Community Dinner</b> -Callahan Fairgrounds	

## **ADDITIONAL RESOURCES**

Name of Organization:

Address:

Phone:

Fax:

Services:

Name of Organization:

Address:

Phone:

Fax:

Services:

Name of Organization:

Address:

Phone:

Fax:

Services:

Name of Organization:

Address:

Phone:

Fax:

Services:

Name of Organization:

Address:

Phone:

Fax:

Services:

Name of Organization:

Address:

Phone:

Fax:

Services:

Name of Organization:

Address:

Phone:

Fax:

Services:

Name of Organization:

Address:

Phone:

Fax:

Services: